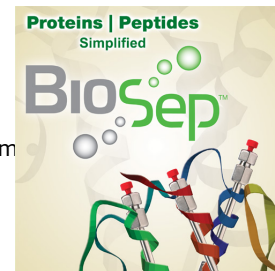


## Medium range MW Separation, 50-500 KDa on BioSep2000 (2) and TSK

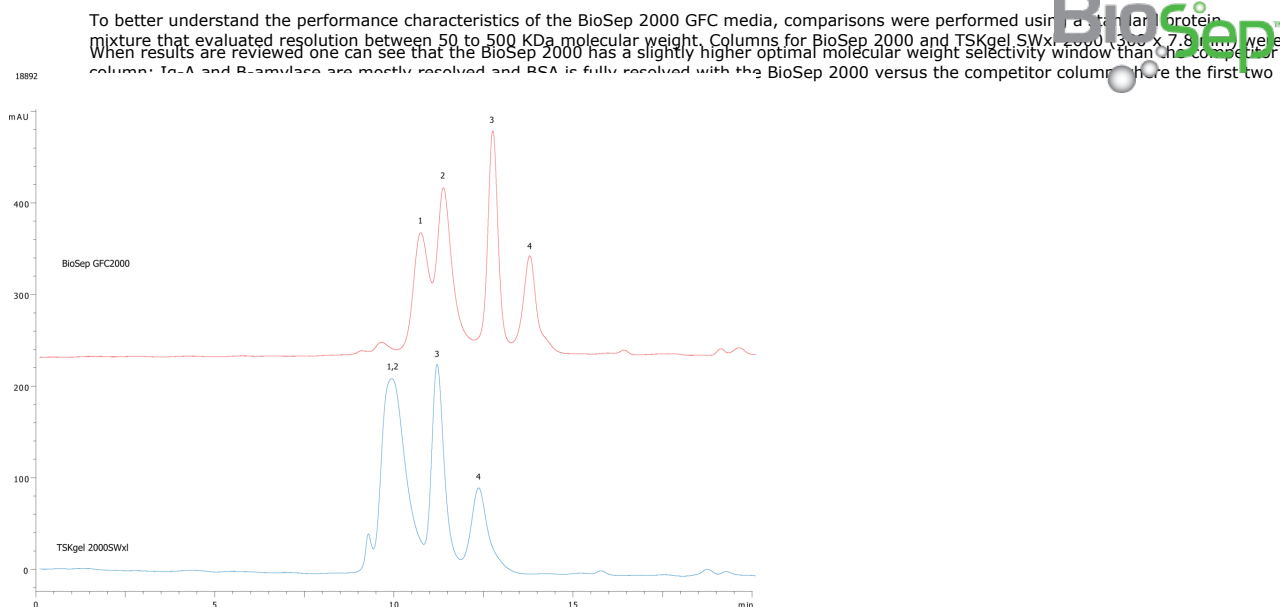
**Column:** BioSep™ 5 µm SEC-s2000 145 Å, LC Column 300 x 7.8 mm, Ea  
**Dimensions:** 300 x 7.8 mm ID  
**Order No:** 00H-2145-K0  
**Elution Type:** Isocratic  
**Eluent A:** 10mM Tris 150mM NaCl, pH 7.4 □□10mM Tris 150mM NaCl, pH 7.4 □□10mM Tris 150mM NaCl, pH 7.4  
**Gradient**  

Step No.	Time (min)	Pct A
1	0	100

**Profile:**  
**Flow Rate:** 0.6 mL/min  
**Col. Temp.:** ambient  
**Detection:** Laser Polarimeter @ 0.0000000000 (ambient)  
**Analyst Note:** Application focus: Comparing and contrasting standard protein separations on BioSep 2000 versus competitor columns.



Products used in this application:



### ANALYTES:

- 1 Human IgA
- 2 beta-Amylase
- 3 BSA
- 4 Ovalbumin

