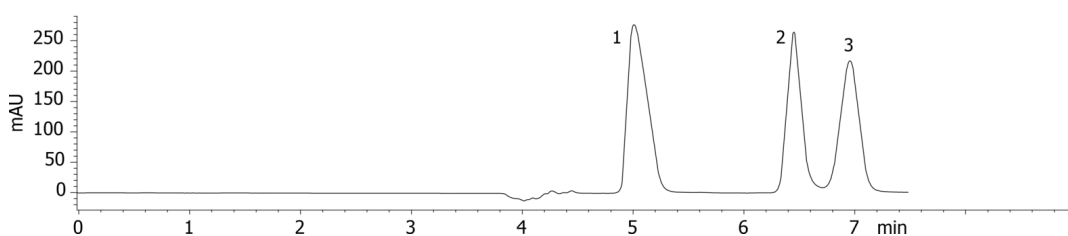


SecurityGuard Comparisons on Lux 250 x 4.6mm With Cartridge

Column: N/A**Dimensions:** N/A**Order No:** N/A**Elution Type:** N/A**Eluent A:** Acetonitrile**Eluent B:** 20mM NH₄HCO₃**Gradient**

Profile:	Step No.	Time (min)	Pct A	Pct B
	1	0	60	40

Flow Rate: 0.7 mL/min**Col. Temp.:** 25 °C**Detection:** Laser Polarimeter @ 0.000000000 (ambient)**Analyst Note:** Analysis performed without SecurityGuard Cartridge (cf. App IDs: 18823 and 18824) using Prodigy Test Mix (PN: AL0-3045) 19071

ANALYTES:

- 1 impurity
- 2 Chlorpheniramine
- 3 Chlorpheniramine

