

Pain Panel with and without sample focusing on Kinetex C18 2.6µm 50 x 2.1 mm by LC/MS

Column: Kinetex® 2.6 µm C18 100 Å, LC Column 50 x 2.1 mm, Ea

Dimensions: 50 x 2.1 mm ID

Order No: 00B-4462-AN

Elution Type: Gradient

Eluent A: 0.1% Formic acid in H₂O

Eluent B: 0.1% Formic acid ACN

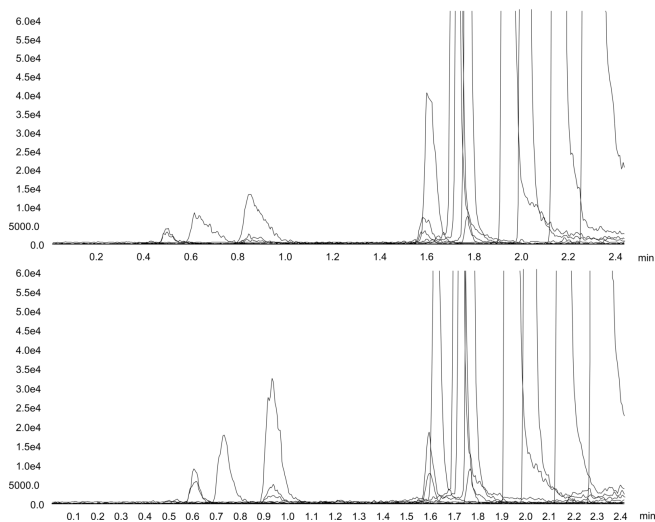
Gradient Profile:	Step No.	Time (min)	Pct A	Pct B
	1	0	95	5
	2	0.5	95	5
	3	2.5	5	95
	4	3.5	5	95
	5	3.51	95	5
	6	5.3	95	5

Flow Rate: 450 µL/min

Col. Temp.: ambient

Detection: Mass Spectrometer (MS) @ amu (ambient)

19167



Products used in this application:



Pain Panel with and without sample focusing on Kinetex C18 2.6µm 50 x 2.1 mm by LC/MS

ANALYTES:

- 1** Morphine
- 2** Oxymorphone
- 3** Hydromorphone
- 4** Codeine
- 5** Naloxone
- 6** Oxycodone
- 7** Naltrexone
- 8** Hydrocodone
- 9** Tramadol
- 10** Meperidine
- 11** Fentanyl
- 12** Buprenorphine
- 13** Methadone

