

## Carbamate Pesticide with and without sample focusing on Kinetex C18 2.6µm 50x2.1mm by LCMS

**Column:** Kinetex® 2.6 µm C18 100 Å, LC Column 50 x 2.1 mm, Ea

**Dimensions:** 50 x 2.1 mm ID

**Order No:** 00B-4462-AN

**Elution Type:** Gradient

**Eluent A:** 5mM Ammonium formate in H2O

**Eluent B:** 5mM Ammonium formate in MeOH

Gradient Profile:	Step No.	Time (min)	Pct A	Pct B
	1	0	85	15
	3	2.5	5	95
	4	3	5	95
	5	3.01	85	15
	6	4.8	85	15

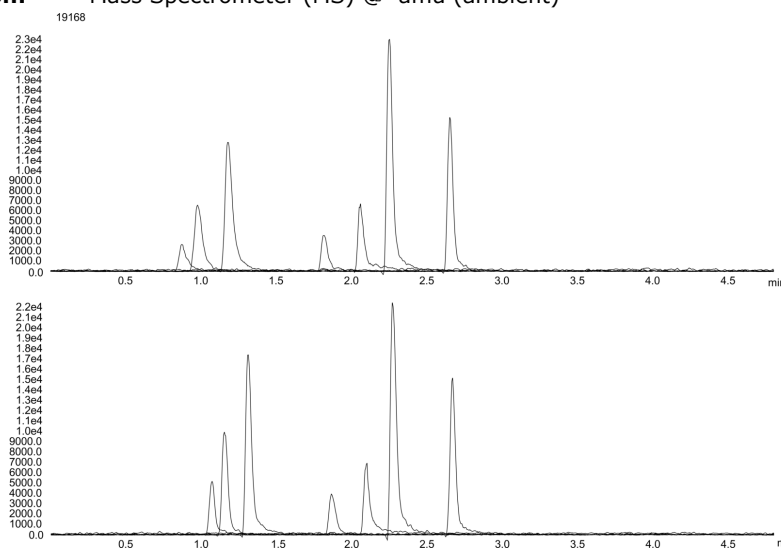
**Flow Rate:** 450 µL/min

**Col. Temp.:** ambient

**Detection:** Mass Spectrometer (MS) @ amu (ambient)



Products used in this application:



### ANALYTES:

- 1** Aldicarb-sulfone  
Retention Time: 0.88 min
- 2** Oxamyl  
Retention Time: 0.98 min
- 3** Methomyl  
Retention Time: 1.18 min
- 4** 3-Hydroxy carbofuran  
Retention Time: 1.81 min
- 5** Aldicarb  
Retention Time: 2.06 min
- 6** Carbofuran  
Retention Time: 2.25 min
- 7** Methiocarb  
Retention Time: 2.65 min

