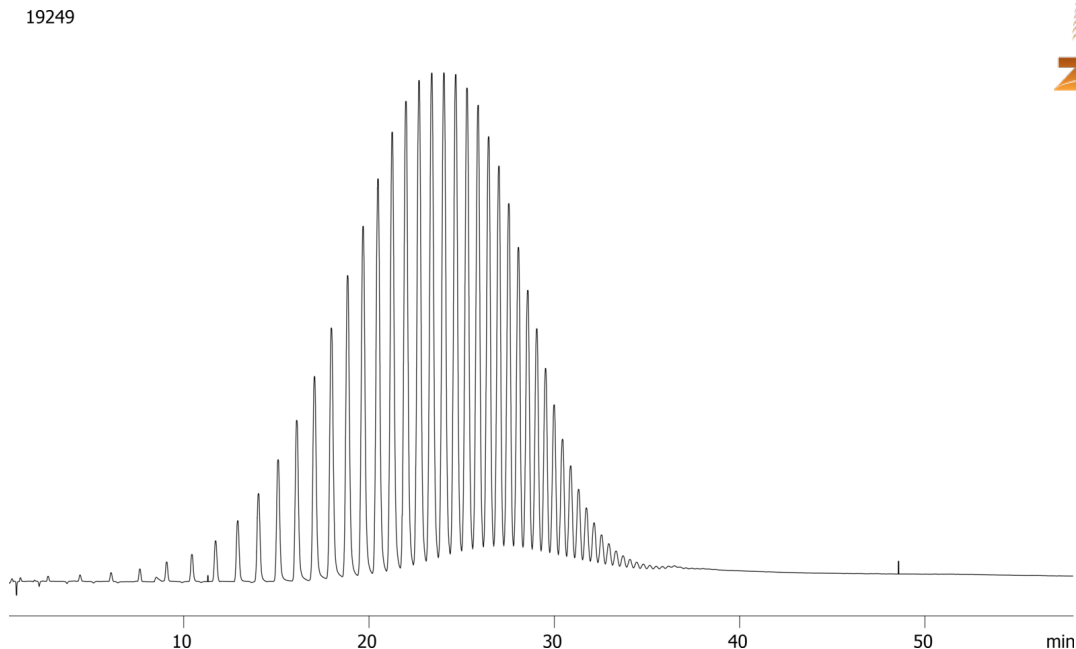


PolyWAX 655 on ZB-1XT SimDist 5x0.53x0.09**Column:** Zebron[™] ZB-1XT SimDist Metal, GC Cap. Column 5 m x 0.53 mm x 0.09 µm, Ea**Phase:** 100% Dimethylpolysiloxane**Dimensions:** 5 meters x 0.53 mm x 0.09 µm**Order No:** 7AK-G026-55**Oven Profile:** 50 °C to 430 °C @ 10 °C/min for 20 min.**Carrier Gas:** Constant Flow Helium, 29 mL/min**Injection:** On-Column :1 1 µL @ 53°C**Detection:** Refractive Index (450°C)**Analyst Note:** This chromatogram has been baseline subtracted. Sample was 1mg/mL in Carbon Disulfide.**Products used in this application:****ANALYTES:****1** PolyWAX 655