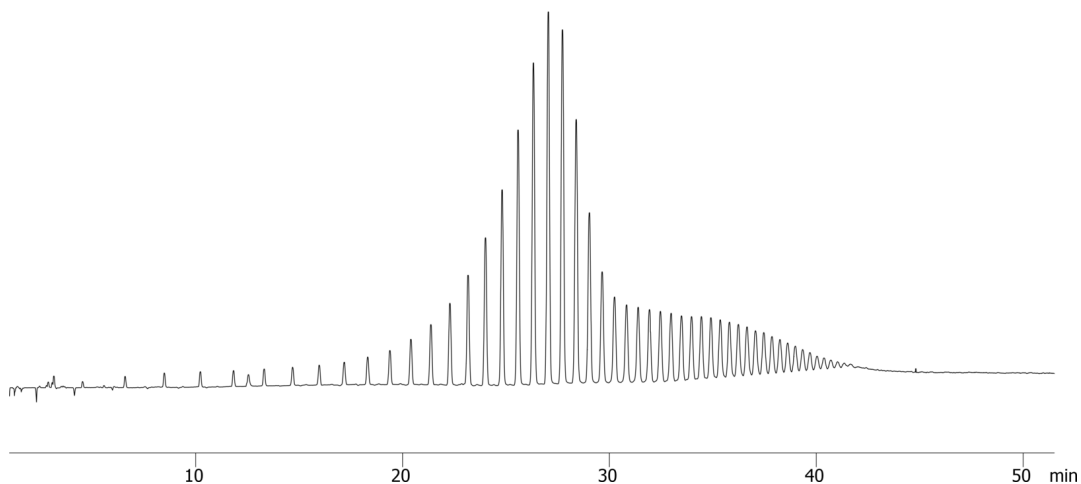


**PolyWAX 1000 on ZB-1XT 5x0.53x0.15****Column:** Zebron<sup>™</sup> ZB-1XT SimDist Metal, GC Cap. Column 5 m x 0.53 mm x 0.15  $\mu$ m, Ea**Phase:** 100% Dimethylpolysiloxane**Dimensions:** 5 meters x 0.53 mm x 0.15  $\mu$ m**Order No:** 7AK-G026-05**Oven Profile:** 35 °C to 450 °C @ 15 °C/min for 10 min**Carrier Gas:** Constant Flow Helium, 15 mL/min**Injection:** On-Column :1 1  $\mu$ L @ 38°C**Detection:** Refractive Index (450°C)**Analyst Note:** Sample was 0.1% in CS<sub>2</sub>. Chromatogram is baseline subtracted.**Products used in this application:****ANALYTES:****1** PolyWAX 1000