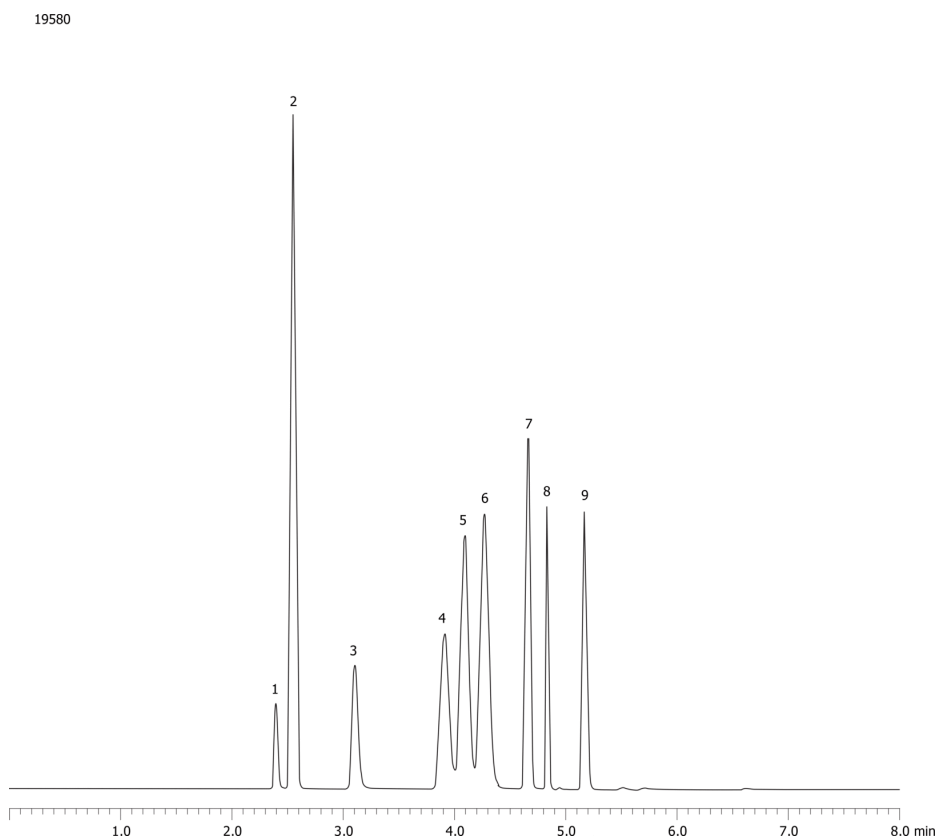


Optimized Separation of Propanal from Blood Alcohols on ZB-BAC1, 30 x 0.53 x 3.00**Column:** Zebtron[™] ZB-BAC-1, GC Cap. Column 30 m x 0.53 mm x 3.00 μ m, Ea**Phase:** Proprietary Blood Alcohol Phase**Dimensions:** 30 meters x 0.53 mm x 3 μ m**Order No:** 7HK-G021-36**Oven Profile:** 30 °C Isothermal**Carrier Gas:** Ramp Flow Helium, 4 mL/min**Injection:** Headspace 30:1 1 μ L @ 180°C**Detection:** Refractive Index (250°C)**Analyst Note:** Sample was 0.100% BAC in water, analyzed by headspace GC
Run as a dual column setup with ZB-BAC2
Ramped flow program was 4 mL/min. for 4.5 min. to 40 mL/min. at 80 mL/min.2 for rest of run.
Liner was 2 mm. i.d. straight**Products used in this application:****ANALYTES:**

- 1 Methanol
- 2 Acetaldehyde
- 3 Ethanol
- 4 Isopropanol
- 5 Propanal
- 6 Acetone
- 7 tert-Butanol
- 8 n-Propanol
- 9 2-Butanol

©2005 Phenomenex Inc. All rights reserved.

For more information contact your Phenomenex Representative at international@phenomenex.com

Phenomenex products are available worldwide.

www.phenomenex.cominternational@phenomenex.com