

**Optimized Separation of Propanal from Blood Alcohols on ZB-BAC2, 30 x 0.53 x 2.00**

**Column:** Zebtron<sup>™</sup> ZB-BAC-2, GC Cap. Column 30 m x 0.53 mm x 2.00  $\mu$ m, Ea  
**Phase:** Proprietary Blood Alcohol Phase  
**Dimensions:** 30 meters x 0.53 mm x 2  $\mu$ m  
**Order No:** 7HK-G022-32  
**Oven Profile:** 30 °C Isothermal

**Carrier Gas:** Ramp Flow Helium, 4 mL/min

**Injection:** Headspace 30:1 1  $\mu$ L @ 180°C

**Detection:** Refractive Index (250°C)

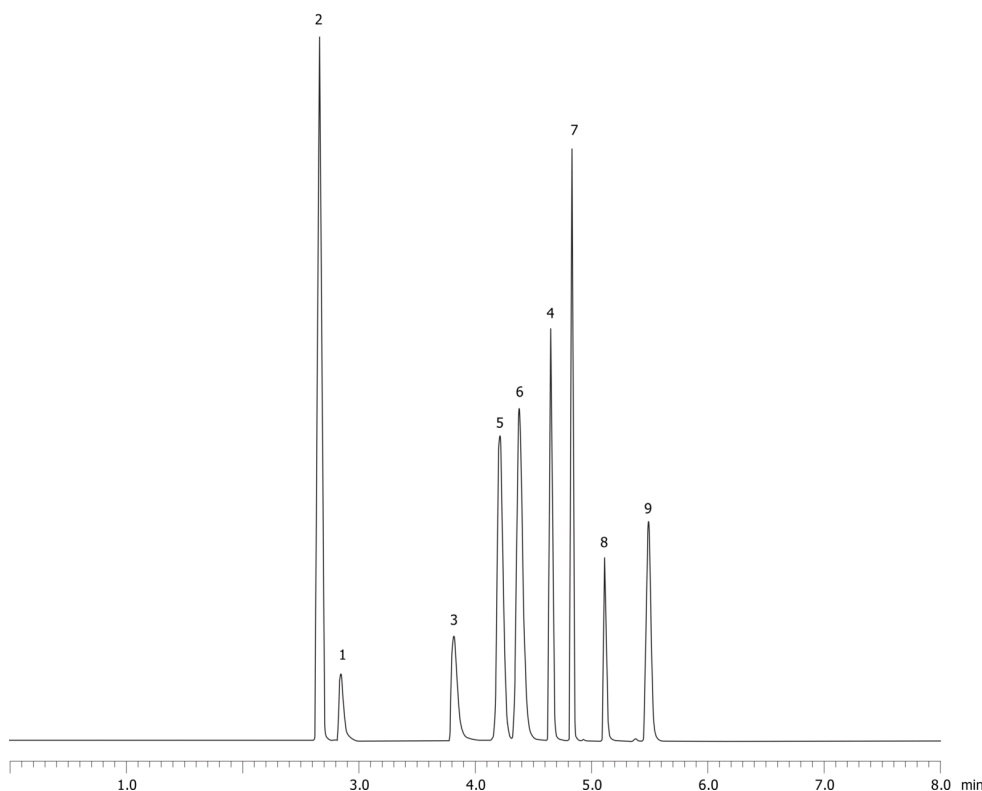
**Analyst Note:** Sample was 0.100% BAC in water, analyzed by headspace GC  
Run as a dual column setup with ZB-BAC1  
Ramped flow program was 4 mL/min. for 4.5 min. to 40 mL/min. at 80 mL/min.2 for rest of run.  
Liner was 2 mm. i.d. straight



**Products used in this application:**



19581

**ANALYTES:**

- 1 Methanol
- 2 Acetaldehyde
- 3 Ethanol
- 4 Isopropanol
- 5 Propanal
- 6 Acetone
- 7 tert-Butanol
- 8 n-Propanol
- 9 2-Butanol

©2005 Phenomenex, Inc. All rights reserved.

For more information contact your Phenomenex Representative at [support@phenomenex.com](mailto:support@phenomenex.com)



Phenomenex products are available worldwide.

[www.phenomenex.com](http://www.phenomenex.com)

[support@phenomenex.com](mailto:support@phenomenex.com)