

## Ibuprofen by HPLC for Kinetex 2.6um XB-C18, 75x4.6mm

**Column:** Kinetex® 2.6 µm XB-C18 100 Å, LC Column 75 x 4.6 mm, Ea

**Dimensions:** 75 x 4.6 mm ID

**Order No:** 00C-4496-E0

**Elution Type:** Isocratic

**Eluent A:** 600:400 Acetonitrile: Water with 4g of chloroacetic acid adjusted to pH 3.0 with ammonium

**Gradient**

Step No.	Time (min)	Pct A
1	10	100

**Profile:**

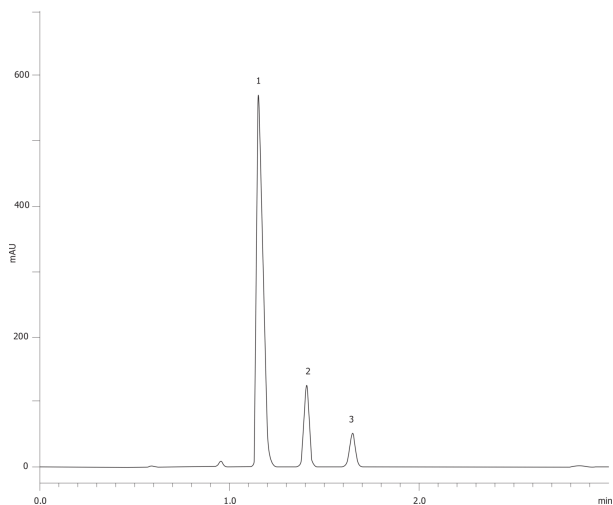
**Flow Rate:** 2 mL/min

**Col. Temp.:** ambient

**Detection:** UV-Vis Abs.-Variable Wave.(UV) @ 254 nm (ambient)



Products used in this application:



### ANALYTES:

**1** Ibuprofen

Retention Time: 1.155 min

**2** Valerophenone

Retention Time: 1.407 min

**3** Ibuprofen related compound C

Retention Time: 1.649 min

