

HPLC Application

ID No.: 19701

Diclofenac from Plasma on Kinetex 2.6µm C18 75x4.6mm

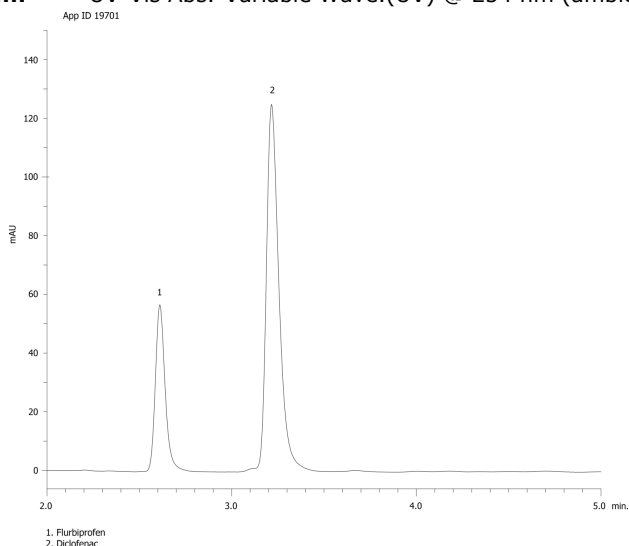
Column: Kinetex[®] 2.6 µm C18 100 Å, LC Column 75 x 4.6 mm, Ea
Dimensions: 75 x 4.6 mm ID
Order No: 00C-4462-E0
Elution Type: Isocratic
Eluent A: 63:37 Water(adjusted to pH 3.3 with phosphoric acid): Methanol
Gradient

Step No.	Time (min)	Pct A
1	5	100

Profile:
Flow Rate: 1.5 mL/min
Col. Temp.: ambient
Detection: UV-Vis Abs.-Variable Wave.(UV) @ 254 nm (ambient)



Products used in this application:



ANALYTES:

- 1** Flurbiprofen
Retention Time: 2.609 min
- 2** Diclofenac
Retention Time: 3.214 min

Sample Preparation Details

for HPLC Application ID No.: 19701

Diclofenac from Plasma on Kinetex 2.6µm C18 75x4.6mm

PRODUCT DESCRIPTION:

Strata[™]-X 33 µm Polymeric Reversed Phase, 30 mg / 1 mL, Tubes , 100/Pk

Order No.: 8B-S100-TAK

SOLID PHASE EXTRACTION (SPE) PROCEDURE:

Note: The solvent volumes shown below are for a 30 mg bed mass.

The solvent volumes will need to be adjusted for a smaller or larger bed mass.

Condition:

Load:

Wash:

Dry:

Elute:

Final Prep and Analysis:

Inject: 0 µL on HPLC UV-Vis Abs.-Variable Wave.(UV) @ 254 nm (ambient)

ANALYTES:	Spiked Conc. (ng/mL)	Log P	pKa	% Rec	%RSC (n=0)
1 Flurbiprofen	0.16				
2 Diclofenac	0.05				

Note: This method is designed as a convenient starting point for further investigation and can be tailored to meet your extraction goals. Call your local Phenomenex Representative for assistance in method development and optimization techniques.

©2025 Phenomenex Inc. All rights reserved.

For more information contact your Phenomenex Representative at international@phenomenex.com.



Phenomenex products are available worldwide.

www.phenomenex.com

international@phenomenex.com