

Hi Temp Stability - Injection on new Aeris WIDEPORE column

Column: Aeris™ 3.6 µm WIDEPORE XB-C18 200 Å, LC Column 50 x 2.1 mm, Ea

Dimensions: 50 x 2.1 mm ID

Order No: 00B-4482-AN

Elution Type: Gradient

Eluent A: Water with 0.1% TFA

Eluent B: Acetonitrile with 0.1% TFA

Gradient	Step No.	Time (min)	Pct A	Pct B
Profile:	1	0	97	3
	2	3	97	3
	3	23	35	65

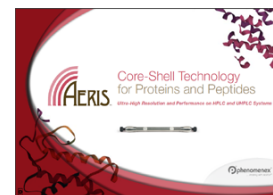
Flow Rate: 0.312 mL/min

Col. Temp.: 90 °C

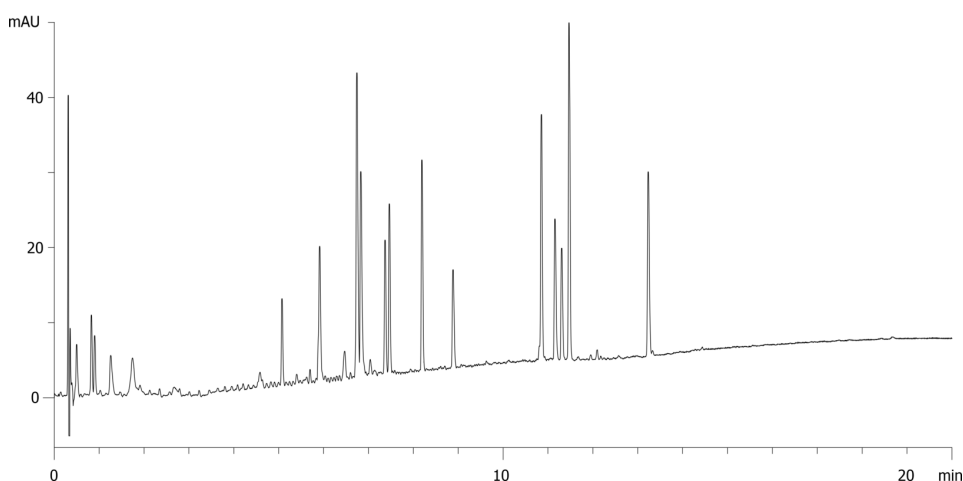
Detection: Circular Dichroism @ 0.0000000000 (ambient)

Analyst Note: Application was actually run on a 50x4.6mm ID running at a flow rate of 1.5 mL/min. 50 x 4.6 mm which is not a commercially available part number. Information switched to 50x2.1mm for those that wish to replicate method.

AppID 19832



Products used in this application:



ANALYTES:

1 Apomyoglobin

