

HPLC Application

ID No.: 19867

Beta-Lactoglobulin Chymotrypsin Digest-Aeris PEPTIDE 3.6u XB-C18 150x4.6mm

Column: Aeris™ 3.6 µm PEPTIDE XB-C18 100 Å, LC Column 150 x 4.6 mm, Ea

Dimensions: 150 x 4.6 mm ID

Order No: 00F-4507-E0

Elution Type: Gradient

Eluent A: 0.1%TFA in Water

Eluent B: 0.1%TFA in ACN

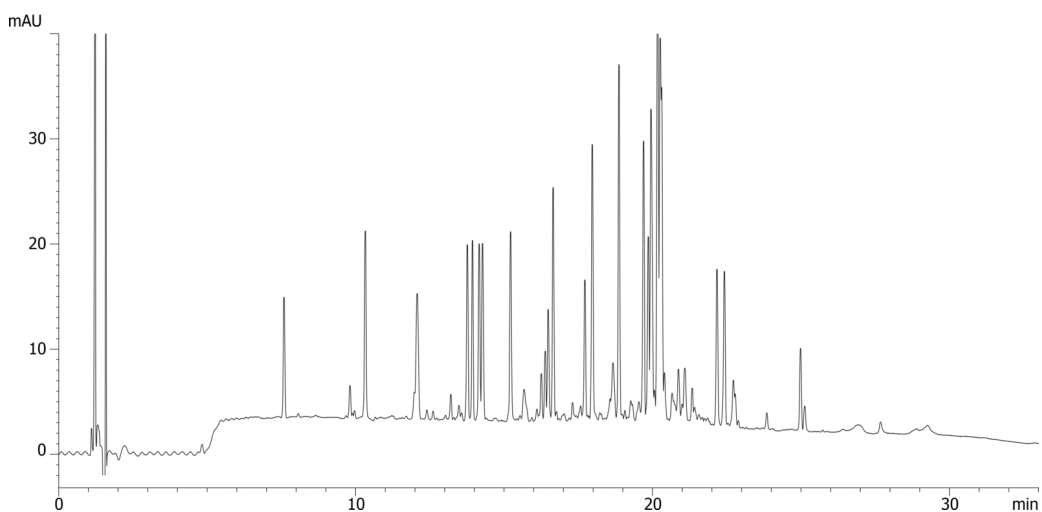
Gradient Profile:	Step No.	Time (min)	Pct A	Pct B
	1	0	97	3
	2	3	97	3
	3	33	50	50
	4	35	5	95

Flow Rate: 1.2 mL/min

Col. Temp.: 40 °C

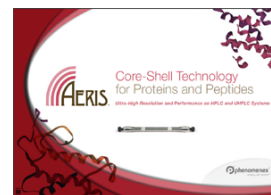
Detection: UV-Vis Abs.-Variable Wave.(UV) @ 214 nm (ambient)

19867



ANALYTES:

- 1 beta-Lactoglobulin Chymotrypsin



Products used in this application:

