

## Aeris Batch Reproducibility #3: SRM 870 on Aeris PEPTIDE 1.7u XB-C18 50x4.6mm

**Column:** Aeris™ 1.7 µm PEPTIDE XB-C18 100 Å, LC Column 50 x 2.1 mm, Ea

**Dimensions:** 50 x 2.1 mm ID

**Order No:** 00B-4506-AN

**Elution Type:** Isocratic

**Eluent A:** 20 mM Potassium Phosphate pH 7

**Eluent B:** Acetonitrile

**Gradient Profile:**

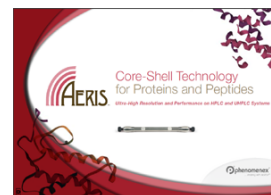
Step No.	Time (min)	Pct A	Pct B
1	0	20	80

**Flow Rate:** 0.384 mL/min

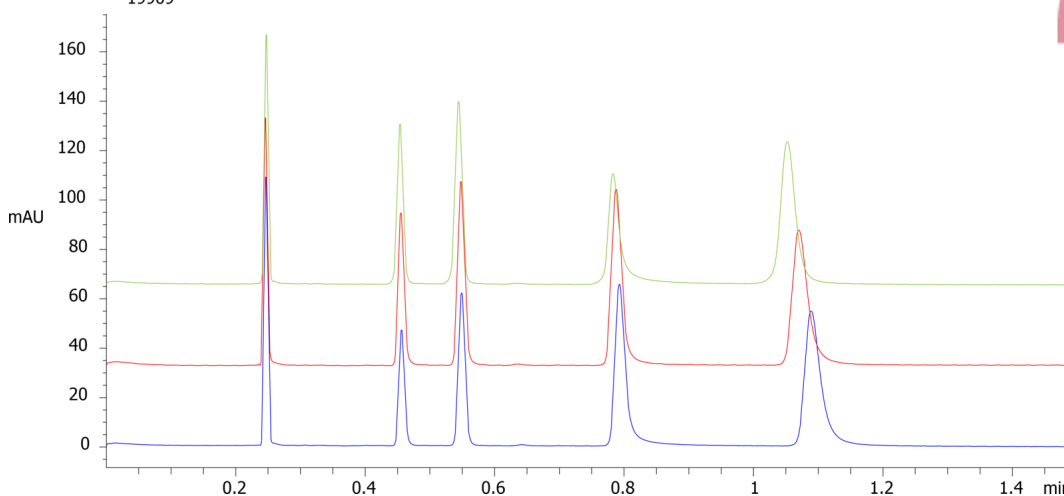
**Col. Temp.:** 30 °C

**Detection:** Circular Dichroism @ 0.0000000000 (ambient)

**Analyst Note:** Actual QC testing is done on a 50 x 4.6 mm running at 1.85 mL/min. Column is not an active PN so column was entered as a 50 x 2.1 mm running at 0.384 mL/min for those that would want to replicate the experiment on a commercially available column.



Products used in this application:



### ANALYTES:

- 1** Uracil  
Retention Time: 0.25 min
- 2** Toluene  
Retention Time: 0.45 min
- 3** Ethyl benzene  
Retention Time: 0.55 min
- 4** Quinizarin  
Retention Time: 0.8 min
- 5** Amitriptyline  
Retention Time: 1.1 min

