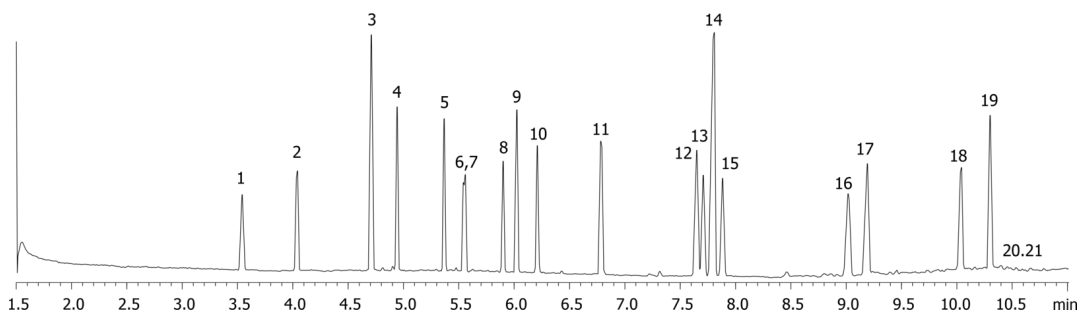


Phthalates by GCMS on a ZB-50 30x0.25x0.25**Column:** Zebron[™] ZB-50, GC Cap. Column 30 m x 0.25 mm x 0.25 µm, Ea**Phase:** 50% Phenyl 50% Dimethylpolysiloxane**Dimensions:** 30 meters x 0.25 mm x 0.25 µm**Order No:** 7HG-G004-11**Oven Profile:****Carrier Gas:** Constant Flow Helium, 1 mL/min**Injection:** Split 10.0000000000:1 0 µL @ 260°C**Detection:** Refractive Index (320°C)**Analyst Note:** Analytes are 100µg/mL

19931

**Products used in this application:**

Phthalates by GCMS on a ZB-50 30x0.25x0.25

ANALYTES:

- 1 Dimethyl phthalate
- 2 Diethyl phthalate
- 3 Diallyl phthalate
- 4 Dipropyl phthalate
- 5 Dibutyl phthalate
- 6 Diisobutyl phthalate
- 7 Dihexyl phthalate
- 8 bis(2-Methoxyethyl)phthalate
- 9 Dipentyl phthalate
- 10 bis(2-Ethoxyethyl)phthalate
- 11 bis(4-Methyl-2-pentyl)phthalate
- 12 Di(ethylhexyl) phthalate
- 13 Butylbenzyl phthalate
- 14 Diheptyl phthalate
- 15 bis(2-Butoxyethyl)phthalate
- 16 Dicyclohexyl phthalate
- 17 Di-n-octyl phthalate
- 18 Diphenylhexyl phthalate
- 19 Dinonyl phthalate
- 20 Diisononyl phthalate
- 21 Diisodecyl phthalate

