

## Phospholipid Removal Phree vs. Traditional PPT(Zoomed Scale)

**Column:** Kinetex® 2.6 µm C18 100 Å, LC Column 50 x 2.1 mm, Ea

**Dimensions:** 50 x 2.1 mm ID

**Order No:** 00B-4462-AN

**Elution Type:** Gradient

**Eluent A:** 0.1% Formic Acid in Water

**Eluent B:** 0.1% Formic Acid in Methanol

Gradient Profile:	Step No.	Time (min)	Pct A	Pct B
	1	0	40	60
	2	0.5	5	95
	3	15.5	5	95
	4	15.51	40	60
	5	19.5	40	60

**Flow Rate:** 400

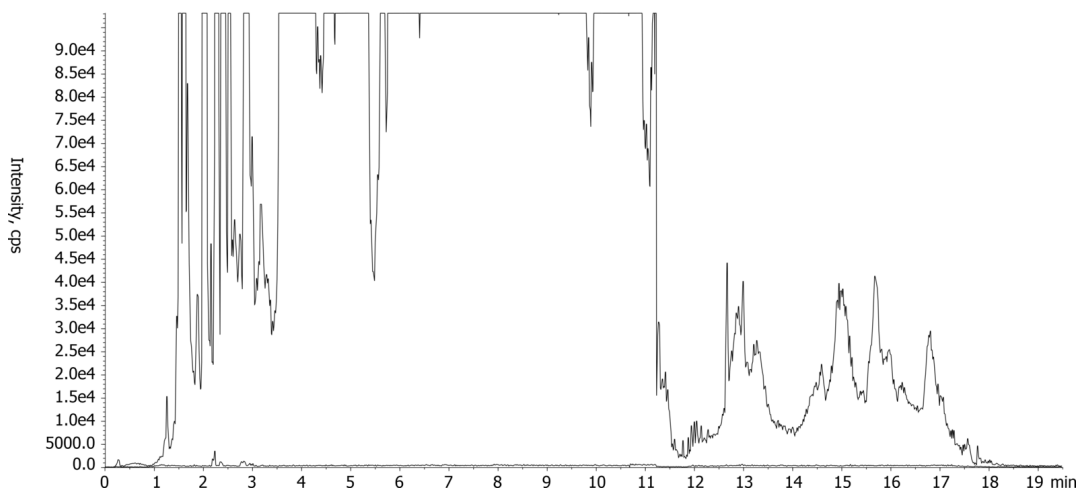
**Col. Temp.:** ambient

**Detection:** Circular Dichroism @ 0.0000000000 (425 °C)

**Analyst Note:** Extracted sample was prepped with Phenomenex Phree Phospholipid Removal Plate. Step 1: Add 300uL of 1% formic acid in acetonitrile directly to Phree plate. Step 2: Add 100uL of plasma directly to Phree plate. Vortex and extract. This was compared to standard protein precipitated plasma



Products used in this application:



### ANALYTES:

- 1 Phospholipid Profile



# Sample Preparation Details

for HPLC Application ID No.: 20012

## Phospholipid Removal Phree vs. Traditional PPT(Zoomed Scale)

### PRODUCT DESCRIPTION:

Phree™ Phospholipid Removal, 30 mg / well, 96-Well Plates , 2/Pk

Order No.: 8E-S133-TGB

### SOLID PHASE EXTRACTION (SPE) PROCEDURE:

**Note:** The solvent volumes shown below are for a 30 mg bed mass.

The solvent volumes will need to be adjusted for a smaller or larger bed mass.

#### Condition:

---

#### Load:

---

Dispense 300 uL ACN with 1% Formic acid into the wells of the plate.

Add 100 uL of plasma.

Mix by vortexing or aspiration.

Filter via centrifugation, vacuum, or positive pressure.

#### Wash:

---

#### Dry:

---

#### Elute:

---

#### Final Prep and Analysis:

---

Inject: 2 µL on HPLC Circular Dichroism @ 0.0000000000 (425°C)

ANALYTES:	Spiked Conc. (ng/mL)	Log P	pKa	% Rec	%RSC (n=0)
1 Phospholipid Profile	0				

**Note:** This method is designed as a convenient starting point for further investigation and can be tailored to meet your extraction goals.  
Call your local Phenomenex Representative for assistance in method development and optimization techniques.

©2025 Phenomenex Inc. All rights reserved.

For more information contact your Phenomenex Representative at support@phenomenex.com



Phenomenex products are available worldwide.

[www.phenomenex.com](http://www.phenomenex.com)

[support@phenomenex.com](mailto:support@phenomenex.com)