

Sulfonamides in Meat by LC/MS/MS

Column: Gemini® 3 µm C18 110 Å, LC Column 50 x 4.6 mm, Ea

Dimensions: 50 x 4.6 mm ID

Order No: 00B-4439-E0

Elution Type: Gradient

Eluent A: 0.1% Formic Acid in Water

Eluent B: Acetonitrile

| Gradient Profile: | Step No. | Time (min) | Pct A | Pct B |
|-------------------|----------|------------|-------|-------|
| | 1 | 0 | 98 | 2 |
| | 2 | 2 | 98 | 2 |
| | 3 | 2.1 | 85 | 15 |
| | 4 | 6.5 | 50 | 50 |
| | 5 | 7.1 | 0 | 100 |
| | 6 | 8 | 0 | 100 |
| | 7 | 8.1 | 98 | 2 |
| | 8 | 10 | 98 | 2 |

Flow Rate: 800

Col. Temp.: ambient

Detection: Circular Dichroism @ 0.0000000000 (300 °C)

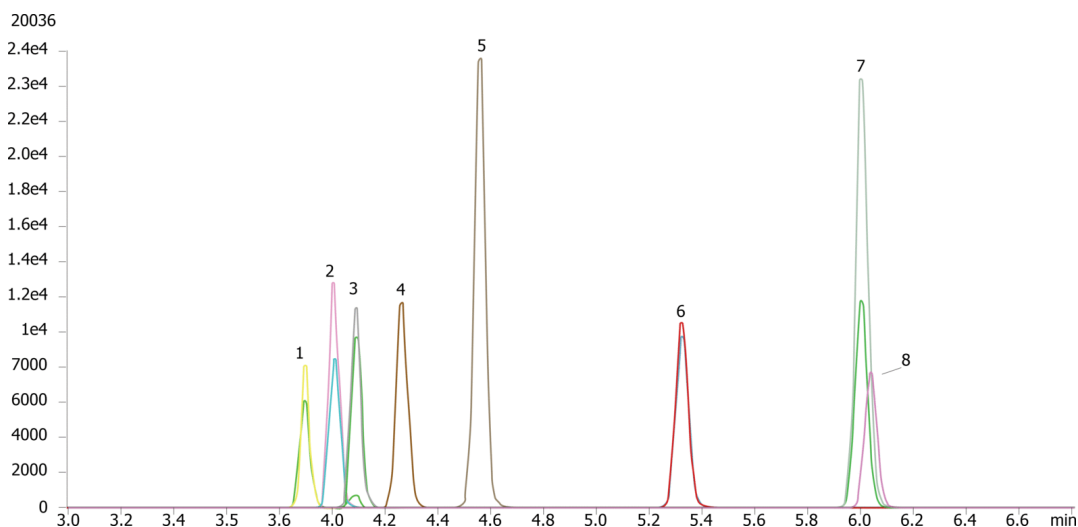
Analyst Note: SecurityGuard™ Guard Cartridge System extends column lifetime.

- SecurityGuard Cartridges, Gemini C18 4 x 3.0mm ID, 10/Pk Part No.: AJ0-7597

- Holder Part No.: KJ0-4282



Products used in this application:



ANALYTES:

- 1 Sulfadiazine
- 2 Sulfathiazole
- 3 Sulfapyridine
- 4 Sulfamerazine
- 5 Sulfamethazine
- 6 Sulfamethoxazole
- 7 Sulfadimethoxine
- 8 Sulfaquinoxaline



Sample Preparation Details

for HPLC Application ID No.: 20036

Sulfonamides in Meat by LC/MS/MS

PRODUCT DESCRIPTION:

Strata™-X 33 µm Polymeric Reversed Phase, 60 mg / 3 mL, Tubes , 50/Pk

Order No.: 8B-S100-UBJ

SOLID PHASE EXTRACTION (SPE) PROCEDURE:

Note: The solvent volumes shown below are for a 60 mg bed mass.

The solvent volumes will need to be adjusted for a smaller or larger bed mass.

Condition:

Load:

Wash:

Dry:

2min at 10inches Hg

Elute:

Final Prep and Analysis:

Inject: 50 µL on HPLC Circular Dichroism @ 0.0000000000 (300°C)

| ANALYTES: | Spiked Conc. (ng/mL) | Log P | pKa | % Rec | %RSC (n=0) |
|--------------------|-------------------------|-------|-----|-------|---------------|
| 1 Sulfadiazine | 0 | | | | |
| 2 Sulfathiazole | 0 | | | | |
| 3 Sulfapyridine | 0 | | | | |
| 4 Sulfamerazine | 0 | | | | |
| 5 Sulfamethazine | 0 | | | | |
| 6 Sulfamethoxazole | 0 | | | | |
| 7 Sulfadimethoxine | 0 | | | | |
| 8 Sulfaquinoxaline | 0 | | | | |

Note: This method is designed as a convenient starting point for further investigation and can be tailored to meet your extraction goals.
Call your local Phenomenex Representative for assistance in method development and optimization techniques.

©2025 Phenomenex Inc. All rights reserved.

For more information contact your Phenomenex Representative at international@phenomenex.com.



Phenomenex products are available worldwide.

www.phenomenex.com

international@phenomenex.com