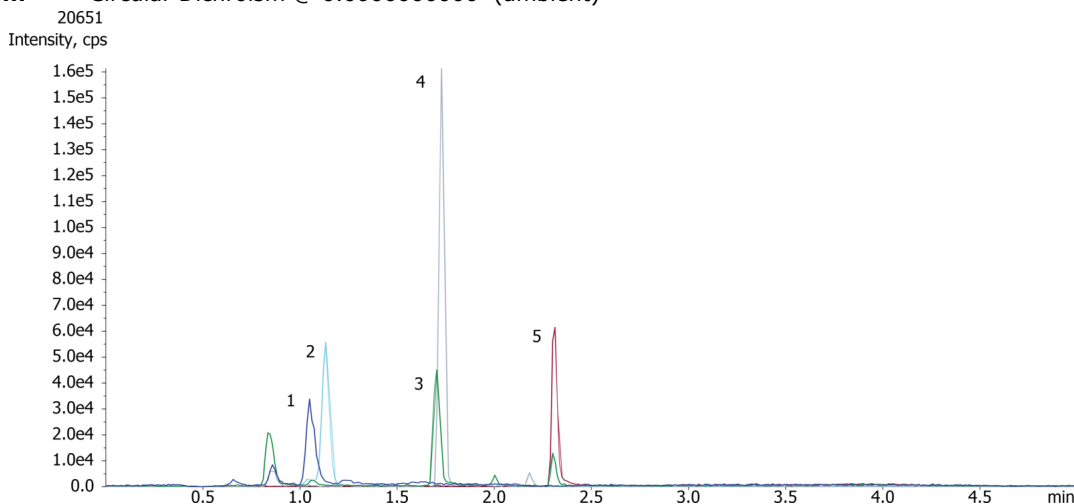


Nicotine and metabolites by LCMS using Gemini NX 3u C18 100x2.1mm**Column:** Gemini® 3 µm NX-C18 110 Å, LC Column 100 x 2 mm, Ea**Dimensions:** 100 x 2 mm ID**Order No:** 00D-4453-B0**Elution Type:** Gradient**Eluent A:** 20mM Ammonium Bicarbonate**Eluent B:** Acetonitrile

Gradient Profile:	Step No.	Time (min)	Pct A	Pct B
	1	0	90	10
	2	3	25	75
	3	3.1	90	10
	4	5	90	10

Flow Rate: 0.5 mL/min**Col. Temp.:** ambient**Detection:** Circular Dichroism @ 0.0000000000 (ambient)**ANALYTES:**

- 1** Nornicotine
Retention Time: 1.09 min
- 2** 3-Hydroxycotinine
Retention Time: 1.16 min
- 3** Anabasine
Retention Time: 1.71 min
- 4** Cotinine
Retention Time: 1.73 min
- 5** Nicotine
Retention Time: 2.31 min



Products used in this application:



Sample Preparation Details

for HPLC Application ID No.: 20651

Nicotine and metabolites by LCMS using Gemini NX 3u C18 100x2.1mm

PRODUCT DESCRIPTION:

StrataTM-X-C 33 μ m Polymeric Strong Cation, 60 mg / 3 mL, Tubes , 50/Pk

Order No.: 8B-S029-UBJ

SOLID PHASE EXTRACTION (SPE) PROCEDURE:

Note: The solvent volumes shown below are for a 60 mg bed mass.

The solvent volumes will need to be adjusted for a smaller or larger bed mass.

Condition:

Load:

Wash:

Dry:

10" Hg for 5 min

Elute:

Final Prep and Analysis:

Inject: 10 μ L on HPLC Circular Dichroism @ 0.0000000000 (ambient)

ANALYTES:	Spiked Conc. (ng/mL)	Log P	pKa	% Rec	%RSC (n=0)
1 Nornicotine	0				
2 3-Hydroxycotinine	0				
3 Anabasine	0				
4 Cotinine	0				
5 Nicotine	0				

Note: This method is designed as a convenient starting point for further investigation and can be tailored to meet your extraction goals.
Call your local Phenomenex Representative for assistance in method development and optimization techniques.

©2025 Phenomenex Inc. All rights reserved.

For more information contact your Phenomenex Representative at support@phenomenex.com



Phenomenex products are available worldwide.

www.phenomenex.com

support@phenomenex.com