

HPLC Application

ID No.: 20908

Water-soluble Vitamins on Kinetex 2.6 μ , C18, 75x4.6 by HPLC (#20715)

Column: Kinetex[®] 2.6 μ m C18 100 Å, LC Column 75 x 4.6 mm, Ea

Dimensions: 75 x 4.6 mm ID

Order No: 00C-4462-E0

Elution Type: Gradient

Eluent A: 3g Sodium 1-hexanesulfonate monohydrate/0.4mL Triethylamine/15mL Acetic acid in 198

Eluent B: Methanol

Gradient Profile:	Step No.	Time (min)	Pct A	Pct B
	1	0	95	5
	2	6	53	47
	3	6.1	2	98
	4	7.5	2	98
	5	7.51	95	5
	6	11	95	5

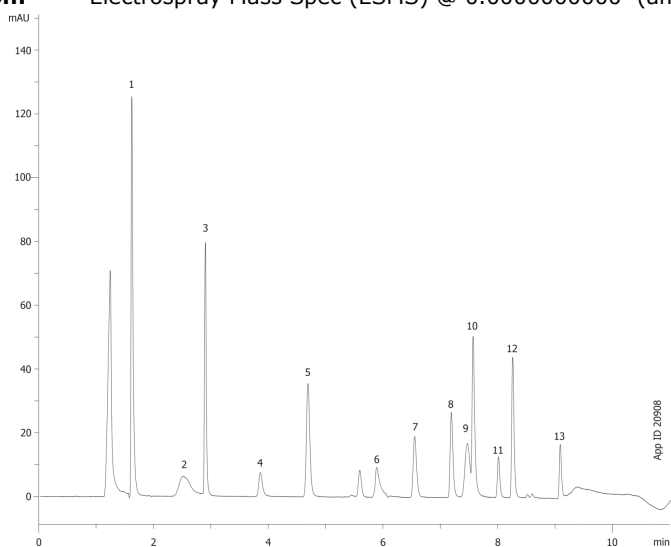
Flow Rate: 0.5 mL/min

Col. Temp.: 25 °C

Detection: Electrospray Mass Spec (ESMS) @ 0.000000000 (ambient)



Products used in this application:



Water-soluble Vitamins on Kinetex 2.6u, C18, 75x4.6 by HPLC (#20715)

ANALYTES:

- 1 Ascorbic acid
- 2 Pyridoxal 5'-phosphate
- 3 Nicotinic acid
- 4 4-Pyridoxic acid
- 5 Nicotinamide
- 6 Riboflavin 5'-phosphate
- 7 Pyridoxal
- 8 Pyridoxine
- 9 Cobalamine
- 10 Folic acid
- 11 Pyridoxamine
- 12 Riboflavin
- 13 Thiamine

