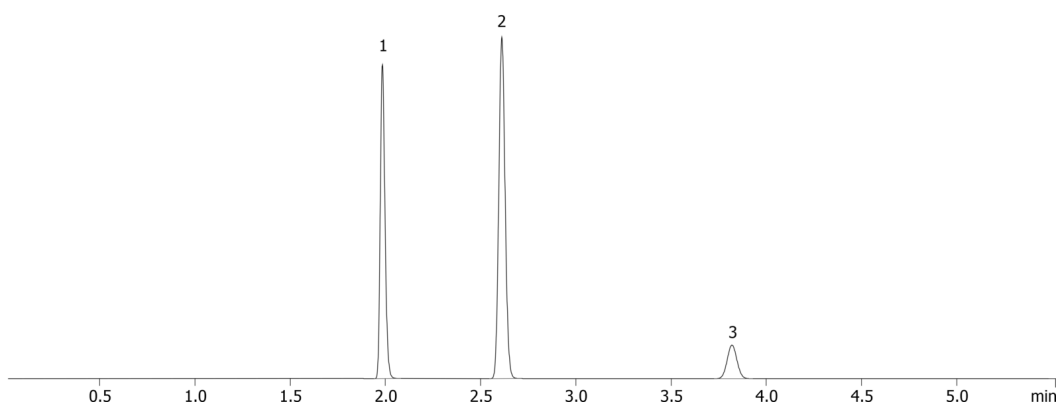


**Underivatized Formaldehyde Analysis on ZB-1****Column:** Zebtron<sup>™</sup> ZB-1, GC Cap. Column 30 m x 0.32 mm x 3.00  $\mu$ m, Ea**Phase:** 100% Dimethylpolysiloxane**Dimensions:** 30 meters x 0.32 mm x 3  $\mu$ m**Order No:** 7HM-G001-36**Oven Profile:** 50 °C Isothermal**Carrier Gas:** Constant Flow Helium, 2.5 mL/min**Injection:** Split 5:1 1  $\mu$ L @ 140°C**Detection:** Refractive Index (250°C)

**Analyst Note:** Sample injected using a Tekmar Versa Headspace Autosampler.  
Headspace oven @ 60 °C for 10 minutes; transfer line = 65 °C; Vial pressurization = 15psi.  
GC analysis on Shimadzu GC-2010 plus  
Analytes were 0.5% in water. Nine different samples were prepared and analyzed with 2.0% RSD in peak area for formaldehyde.

**Products used in this application:**

21516

**ANALYTES:**

- 1 Formaldehyde
- 2 Methanol
- 3 Ethanol

