

HPLC Application

ID No.: 21686

Diclofop on Lux 5µm Cellulose-2 in NP

Column: Lux[®] 5 µm Cellulose-2, LC Column 250 x 4.6 mm, Ea

Dimensions: 250 x 4.6 mm ID

Order No: 00G-4457-E0

Elution Type: Isocratic

Eluent A: Hexane / IPA (90:10) Formic acid (0.1%)

Gradient	Step No.	Time (min)	Pct A
Profile:	1	0	100

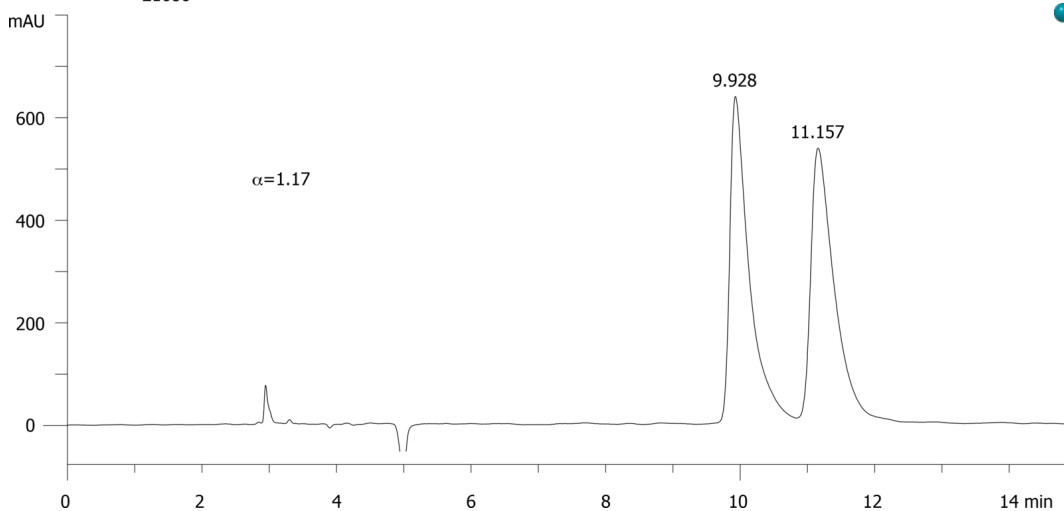
Flow Rate: 1 mL/min

Col. Temp.: ambient

Detection: Electrospray Mass Spec (ESMS) @ 0.000000000 (ambient)
21686



Products used in this application:



ANALYTES:

1 Diclofop

Retention Time: 9.928 min

2 Diclofop

Retention Time: 11.157 min

