

Mycotoxins extracted from corn using roQ by LC/MS/MS (Negative mode)

Column: Kinetex® 2.6 µm XB-C18 100 Å, LC Column 50 x 2.1 mm, Ea

Dimensions: 50 x 2.1 mm ID

Order No: 00B-4496-AN

Elution Type: Gradient

Eluent A: 5 mM ammonium acetate w/ 0.5% acetic acid

Eluent B: 5 mM ammonium acetate in methanol w/ 0.5% acetic acid

| Gradient Profile: | Step No. | Time (min) | Pct A | Pct B |
|-------------------|----------|------------|-------|-------|
| | 1 | 0 | 95 | 5 |
| | 2 | 2 | 95 | 5 |
| | 3 | 5 | 20 | 80 |
| | 4 | 5.2 | 2 | 98 |
| | 5 | 8 | 2 | 98 |

Flow Rate: 0.45 mL/min

Col. Temp.: ambient

Detection: Electrospray Mass Spec (ESMS) @ 0.0000000000 (ambient)

Analyst Note: roQ extraction:

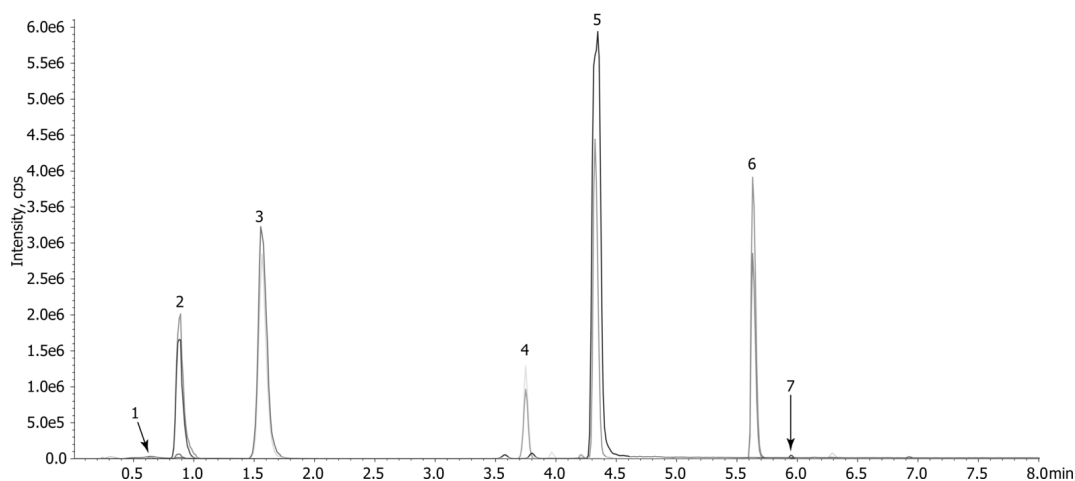
- 1) 5 g of corn is extracted using KSO-8909 with 10 mL of water and 10 mL of ACN with 1.0 % formic acid.
2. KSO-8924 is used for dSPE clean up.



Products used in this application:



22712



ANALYTES:

- 1** Patulin
Retention Time: 0.65 min
- 2** Nivalenol
Retention Time: 0.88 min
- 3** Deoxynivalenol
Retention Time: 1.57 min
- 4** Fusarenon-X
Retention Time: 3.76 min
- 5** 3-Acetyldeoxynivalenol
Retention Time: 4.34 min
- 6** Zearalenone
Retention Time: 5.64 min
- 7** Verruculogen
Retention Time: 5.96 min

