

## Oxytocin and ARG-Vasopressin Chromatogram

**Column:** Luna® 3 µm PFP(2) 100 Å, LC Column 50 x 2 mm, Ea

**Dimensions:** 50 x 2 mm ID

**Order No:** 00B-4447-B0

**Elution Type:** Gradient

**Eluent A:** 0.1%FA in water

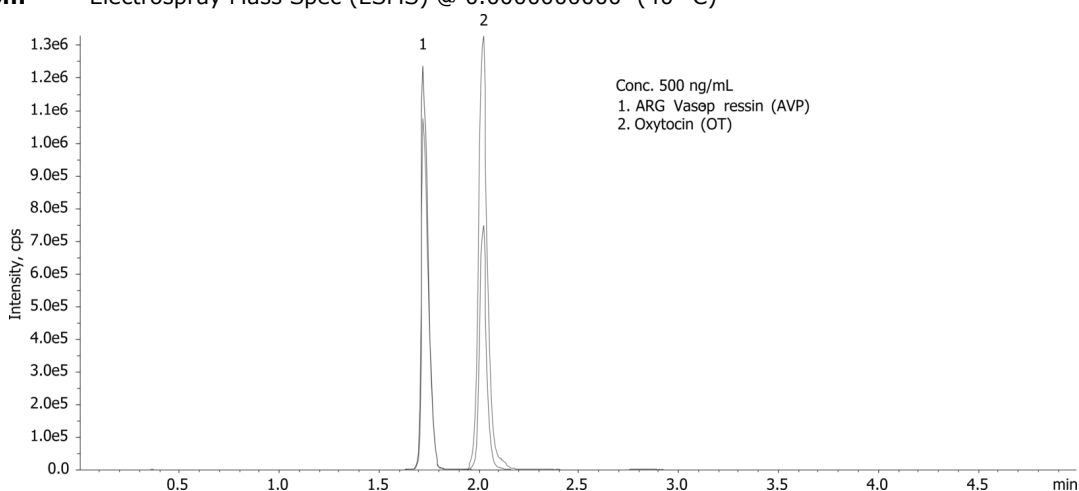
**Eluent B:** 0.1%FA in 50:50 MeOH:Acetonitrile

| Gradient Profile: | Step No. | Time (min) | Pct A | Pct B |
|-------------------|----------|------------|-------|-------|
|                   | 1        | 0          | 90    | 10    |
|                   | 2        | 0.2        | 90    | 10    |
|                   | 3        | 0.5        | 70    | 30    |
|                   | 4        | 3.5        | 70    | 30    |
|                   | 5        | 3.51       | 30    | 70    |
|                   | 6        | 4          | 30    | 70    |
|                   | 7        | 4.01       | 90    | 10    |
|                   | 8        | 5          | 90    | 10    |

**Flow Rate:** 0.45 mL/min

**Col. Temp.:** ambient

**Detection:** Electrospray Mass Spec (ESMS) @ 0.0000000000 (40 °C)



Products used in this application:



### ANALYTES:

**1** Oxytocin

Retention Time: 2.02 min

**2** ARG-Vasopressin

Retention Time: 1.72 min



# Sample Preparation Details

for HPLC Application ID No.: 22770

## Oxytocin and ARG-Vasopressin Chromatogram

### PRODUCT DESCRIPTION:

Strata™-X-CW 33 µm Polymeric Weak Cation, 30 mg / well, 96-Well Plates , 2/Pk

Order No.: 8E-S035-TGB

### SOLID PHASE EXTRACTION (SPE) PROCEDURE:

**Note:** The solvent volumes shown below are for a 30 mg bed mass.

The solvent volumes will need to be adjusted for a smaller or larger bed mass.

#### Condition:

#### Load:

#### Wash:

#### Dry:

3-5 min

#### Elute:

#### Final Prep and Analysis:

Inject: 10 µL on HPLC Electrospray Mass Spec (ESMS) @ 0.0000000000 (40°C)

| ANALYTES:         | Spiked Conc.<br>(ng/mL) | Log P | pKa | % Rec | %RSC<br>(n=0) |
|-------------------|-------------------------|-------|-----|-------|---------------|
| 1 Oxytocin        | 0                       |       |     |       |               |
| 2 ARG-Vasopressin | 0                       |       |     |       |               |

**Note:** This method is designed as a convenient starting point for further investigation and can be tailored to meet your extraction goals.  
Call your local Phenomenex Representative for assistance in method development and optimization techniques.

©2025 Phenomenex Inc. All rights reserved.

For more information contact your Phenomenex Representative at support@phenomenex.com



Phenomenex products are available worldwide.

[www.phenomenex.com](http://www.phenomenex.com)

[support@phenomenex.com](mailto:support@phenomenex.com)