

Substituted Phenol Isomers on a Kinetex 2.6 µm F5 150 x 4.6

Column: Kinetex® F5 2.6µm 100 Å, LC Column 150 x 4.6 mm, Ea
Dimensions: 150 x 4.6 mm ID
Order No: 00F-4723-E0
Elution Type: Isocratic
Eluent A: 0.1% TFA in Water
Eluent B: Acetonitrile
Gradient

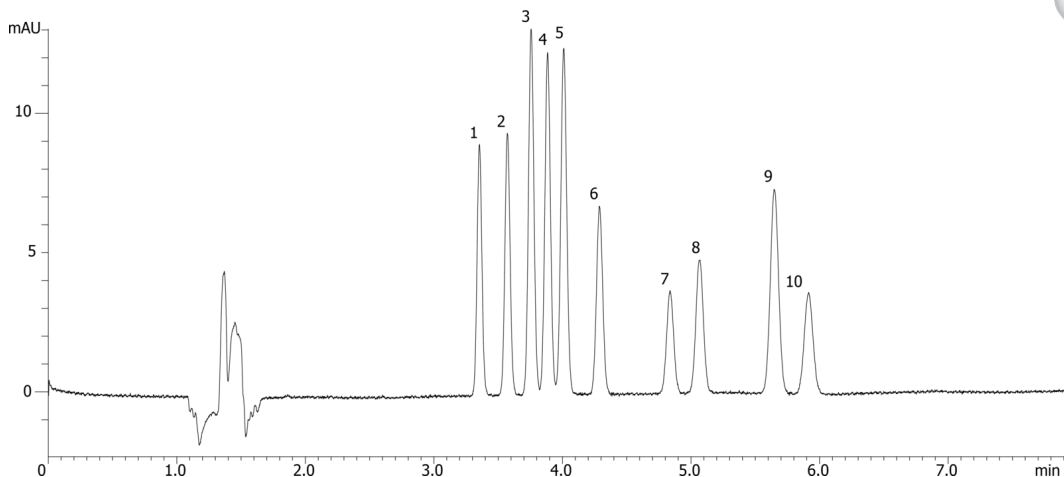
Step No.	Time (min)	Pct A	Pct B
1	0	55	45

Profile:
Flow Rate: 1 mL/min
Col. Temp.: ambient
Detection: Electrospray Mass Spec (ESMS) @ 0.0000000000 (ambient)

22799



Products used in this application:



Substituted Phenol Isomers on a Kinetex 2.6 μ m F5 150 x 4.6

ANALYTES:

- 1** 3,4-Dimethylphenol
- 2** 3,5-Dimethylphenol
- 3** 2,3-Dimethylphenol
- 4** 2,5-Dimethylphenol
- 5** 2,6-Dimethylphenol
- 6** 2,6-Dichlorophenol
- 7** 2,5-Dichlorophenol
- 8** 3,4-Dichlorophenol
- 9** 2,4-Dibromophenol
- 10** 3,5-Dichlorophenol

