

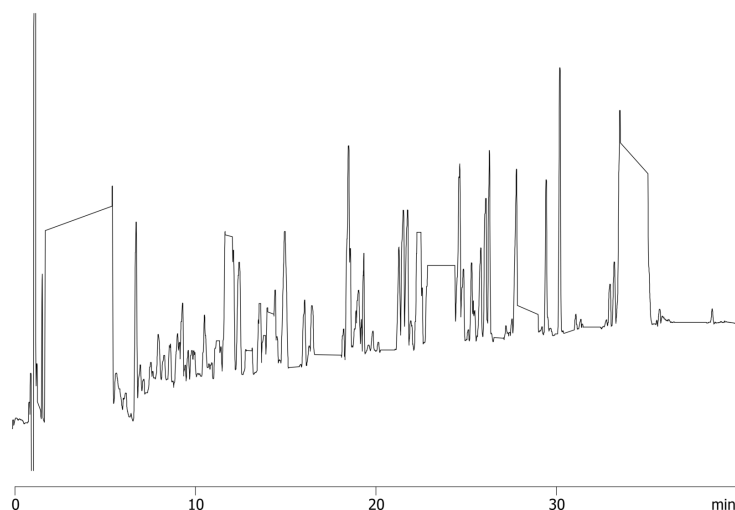
Peptide map on Kinetex 2.6 µm EVO C18 (Phosphorylase B)**Column:** Kinetex® 2.6µm EVO C18 100 Å, LC Column 150 x 4.6 mm, Ea**Dimensions:** 150 x 4.6 mm ID**Order No:** 00F-4725-E0**Elution Type:** Gradient**Eluent A:** 0.1% TFA/2% ACN in Water**Eluent B:** 0.1% TFA/ ACN (10:90)

Gradient	Step No.	Time (min)	Pct A	Pct B
Profile:	1	0	98	2
	2	68	30	70

Flow Rate: 1.5 mL/min**Col. Temp.:** 60 °C**Detection:** Electrospray Mass Spec (ESMS) @ 0.0000000000 (ambient)**Analyst Note:** Forced degradation protocol:

Reconstitute 1 mg of cefaclor neat standard with 1.0 mL of 1 M HCl. Heat the solution at 60 °C for 6 hours then neutralize with 1.0 mL of 1 M NaOH. Refrigerate until ready to inject.

22987

**ANALYTES:**

- 1 Peptide map (phosphorylase b)

**Products used in this application:**