

Bupropion Extracted from Urine using Strata X-CW and Kinetex 5u EVO C18

Column: Kinetex® 5µm EVO C18 100 Å, LC Column 150 x 4.6 mm, Ea

Dimensions: 150 x 4.6 mm ID

Order No: 00F-4633-E0

Elution Type: Gradient

Eluent A: 5mM Ammonium Bicarbonate pH 9.0

Eluent B: Methanol

Gradient Profile:	Step No.	Time (min)	Pct A	Pct B
	1	0	50	50
	2	10	20	80

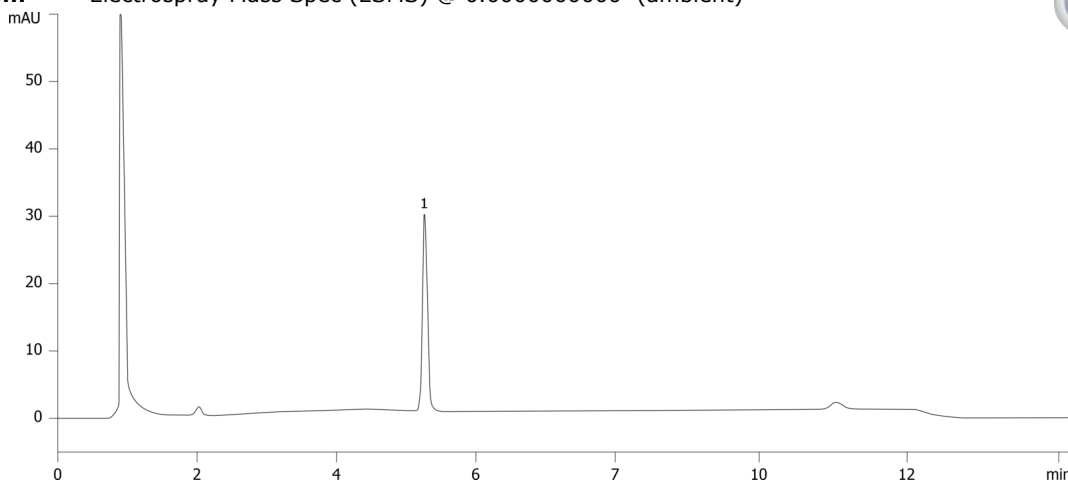
Flow Rate: 1 mL/min

Col. Temp.: ambient

Detection: Electrospray Mass Spec (ESMS) @ 0.0000000000 (ambient)



Products used in this application:



ANALYTES:

1 Bupropion



Sample Preparation Details

for HPLC Application ID No.: 23095

Bupropion Extracted from Urine using Strata X-CW and Kinetex 5u EVO C18

PRODUCT DESCRIPTION:

Strata™-X-CW 33 µm Polymeric Weak Cation, 60 mg / 3 mL, Tubes , 50/Pk

Order No.: 8B-S035-UBJ

SOLID PHASE EXTRACTION (SPE) PROCEDURE:

Note: The solvent volumes shown below are for a 60 mg bed mass.

The solvent volumes will need to be adjusted for a smaller or larger bed mass.

Condition:

Load:

Wash:

Dry:

5 minutes

Elute:

Final Prep and Analysis:

Inject: 2 µL on HPLC Electrospray Mass Spec (ESMS) @ 0.0000000000 (ambient)

ANALYTES:	Spiked Conc. (ng/mL)	Log P	pKa	% Rec	%RSC (n=0)
1 Bupropion	0				

Note: This method is designed as a convenient starting point for further investigation and can be tailored to meet your extraction goals.
Call your local Phenomenex Representative for assistance in method development and optimization techniques.

©2025 Phenomenex Inc. All rights reserved.

For more information contact your Phenomenex Representative at support@phenomenex.com



Phenomenex products are available worldwide.

www.phenomenex.com

support@phenomenex.com