

HPLC Application

ID No.: 23300

Mianserine on Lux 5 μ m Amylose-1 by SFC

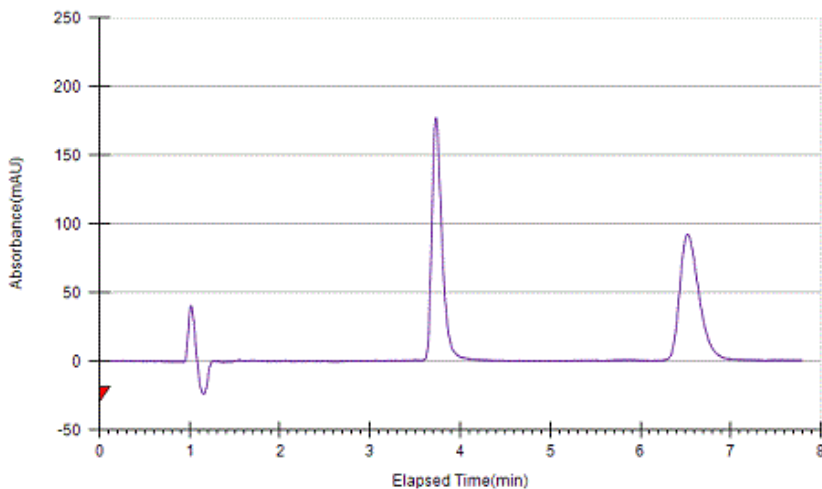
Column: Lux[®] 5 μ m Amylose-1, LC Column 250 x 4.6 mm, Ea
Dimensions: 250 x 4.6 mm ID
Order No: 00G-4732-E0
Elution Type: Isocratic
Eluent A: CO₂/(Methanol + 0.25% IPA + 0.25% TFA) 90:10 (v/v)
Gradient

Step No.	Time (min)	Pct A
1	0	100

Profile:
Flow Rate: 3 mL/min
Col. Temp.: 30 °C
Detection: Electrospray Mass Spec (ESMS) @ 0.000000000 (30 °C)
Analyst Note: Courtesy of Tanika Van Mulders, Debby Mangelings and Yvan Vander Heyden, Department of Analytical Chemistry and Pharmaceutical Technology, Vrije Universiteit Brussel, Brussels, Belgium.
Results of this analysis yielded: Alpha >1.1 and Resolution >2



Products used in this application:



ANALYTES:

- 1 Mianserine
- 2 Mianserine