

# HPLC Application

ID No.: 23754

## Zopiclone on Lux 5µm i-Cellulose-5 250x4.6mm (MS)

**Column:** Lux<sup>®</sup> 5 µm i-Cellulose-5, LC Column 250 x 4.6 mm, Ea

**Dimensions:** 250 x 4.6 mm ID

**Order No:** 00G-4756-E0

**Elution Type:** Isocratic

**Eluent A:** 5mM Ammonium Bicarbonate

**Eluent B:** Acetonitrile

Gradient	Step No.	Time (min)	Pct A	Pct B
<b>Profile:</b>	<b>1</b>	0	20	80

**Flow Rate:** 1 mL/min

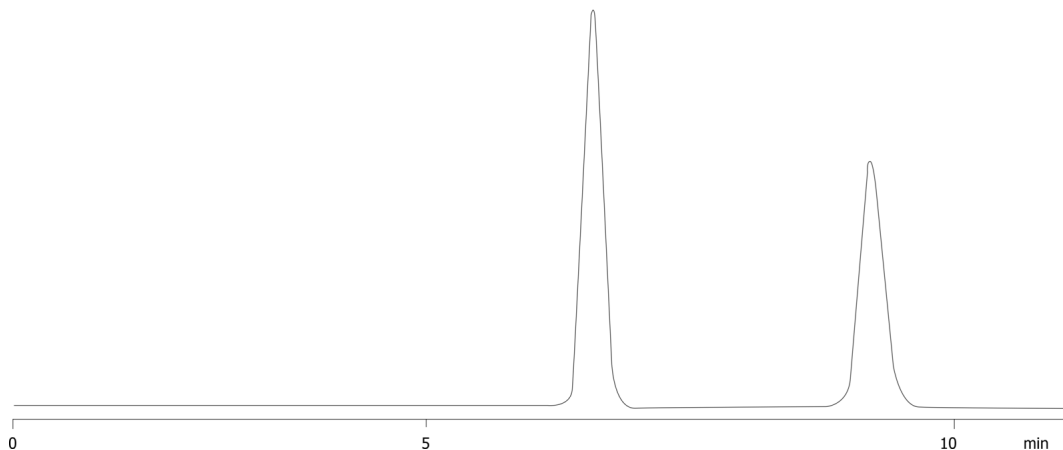
**Col. Temp.:** 20 °C

**Detection:** Electrospray Mass Spec (ESMS) @ 0.000000000 (20 °C)

23754



Products used in this application:



### ANALYTES:

**1** Zopiclone

Retention Time: 6.59 min

**2** Zopiclone

Retention Time: 9.22 min

