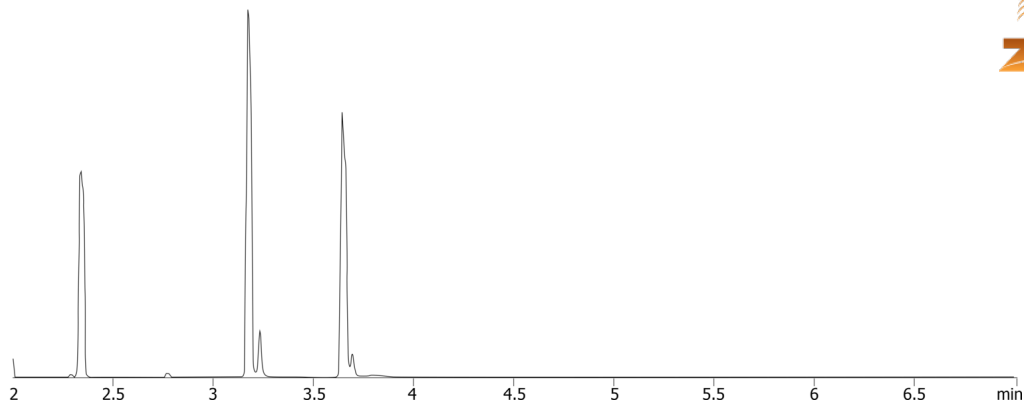


THCs extracted from Human Urine using Strata Screen C on GC/MS (TIC)**Column:** Zebtron™ ZB-5MSi, GC Cap. Column 10 m x 0.18 mm x 0.18 µm, Ea**Phase:** 5% Phenyl 95% Dimethylpolysiloxane**Dimensions:** 10 meters x 0.18 mm x 0.18 µm**Order No:** 7CD-G018-08**Oven Profile:** 200 °C to 300 °C @ 20 °C/min**Carrier Gas:** Constant Flow Helium, 0.7 mL/min**Injection:** Split 10:1 1 µL @ 280°C**Detection:** Mass Spectrometer (MS) (320°C)

23876

**Products used in this application:****ANALYTES:**

- 1 Delta 9 THC
Retention Time: 2.35 min
- 2 Delta 9 THC-D3
- 3 Hydroxy THC
Retention Time: 3.19 min
- 4 Hydroxy THC-D3
- 5 Carboxy THC
Retention Time: 3.65 min
- 6 Carboxy THC-D3



Sample Preparation Details

for GC

Application ID No.: 23876

THCs extracted from Human Urine using Strata Screen C on GC/MS (TIC)

PRODUCT DESCRIPTION:

Strata® Screen-C (55 µm, 70 Å), 200 mg / 3 mL, Tubes , 50/Pk

Order No.: 8B-S016-FBJ

SOLID PHASE EXTRACTION (SPE) PROCEDURE:

Note: The solvent volumes shown below are for a 200 mg bed mass.

The solvent volumes will need to be adjusted for a smaller or larger bed mass.

Condition:

Load:

Wash:

Dry:

5 minutes 10 inches Hg

Elute:

Final Prep and Analysis:

Add 50uL Ethyl Acete and 50uL BSTFA (with 1% TMCS), Mix/vortex, react 20 minutes @ 70C, remove from heat source and transfer to autosampler vial.

Inject: 1 µL on HPLC Mass Spectrometer (MS) @ amu (320°C)

ANALYTES:	Spiked Conc. (ng/mL)	Log P	pKa	% Rec	%RSC (n=0)
1 Delta 9 THC	0				
2 Delta 9 THC-D3	0				
3 Hydroxy THC	0				
4 Hydroxy THC-D3	0				
5 Carboxy THC	0				
6 Carboxy THC-D3	0				

Note: This method is designed as a convenient starting point for further investigation and can be tailored to meet your extraction goals. Call your local Phenomenex Representative for assistance in method development and optimization techniques.

©2025 Phenomenex Inc. All rights reserved.

For more information contact your Phenomenex Representative at support@phenomenex.com



Phenomenex products are available worldwide.

www.phenomenex.com

support@phenomenex.com