

# HPLC Application

ID No.: 24037

## Water Soluble Vitamins on Luna Omega 3u Polar C18 100x4.6mm

**Column:** Luna® Omega 3 µm Polar C18 100 Å, LC Column 100 x 4.6 mm, Ea

**Dimensions:** 100 x 4.6 mm ID

**Order No:** 00D-4760-E0

**Elution Type:** Gradient

**Eluent A:** 20mM Potassium Phosphate pH 3.5

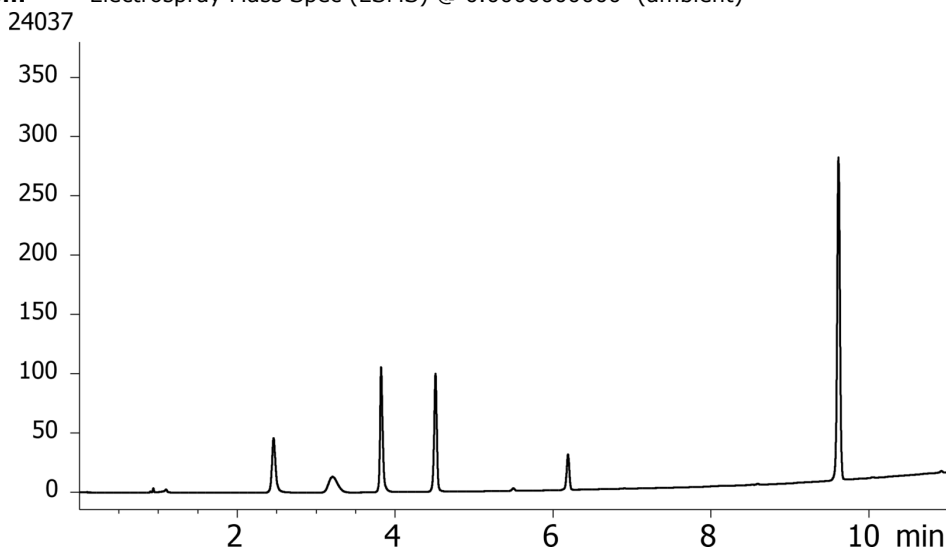
**Eluent B:** Methanol

Gradient Profile:	Step No.	Time (min)	Pct A	Pct B
	1	0	100	0
	2	1	100	0
	3	10	40	60
	4	11	40	60
	5	11.1	100	0
	6	15	100	0

**Flow Rate:** 1.2 mL/min

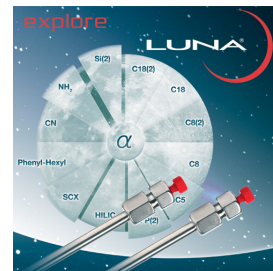
**Col. Temp.:** ambient

**Detection:** Electrospray Mass Spec (ESMS) @ 0.000000000 (ambient)



### ANALYTES:

- 1 Thiamine
- 2 Nicotinamide
- 3 Pyridoxal
- 4 Pyridoxine
- 5 Panthothenic Acid
- 6 Riboflavin



Products used in this application:

