

HPLC Application

ID No.: 24142

Cannabinoids using Kinetex 2.6um Polar C18 150x4.6mm

Column: Kinetex[®] 2.6 μ m Polar C18 100 Å, LC Column 150 x 4.6 mm, Ea

Dimensions: 150 x 4.6 mm ID

Order No: 00F-4759-E0

Elution Type: Gradient

Eluent A: Water with 0.1% phosphoric acid

Eluent B: Acetonitrile with 0.1% phosphoric acid

Gradient Profile:	Step No.	Time (min)	Pct A	Pct B
	1	0	25	75
	2	6	0	100

Flow Rate: 1.8 mL/min

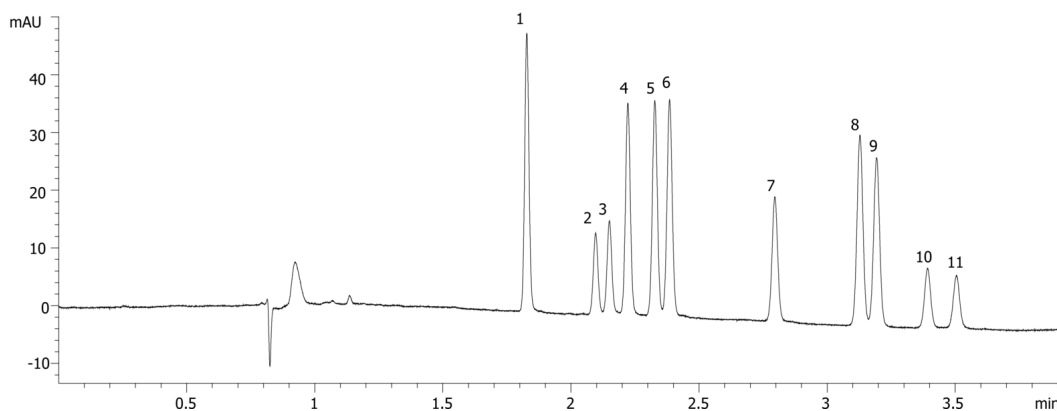
Col. Temp.: 50 °C

Detection: Electrospray Mass Spec (ESMS) @ 0.000000000 (ambient)

24142



Products used in this application:



Cannabinoids using Kinetex 2.6um Polar C18 150x4.6mm

ANALYTES:

- 1** CBDV
- 2** CBD-A
- 3** CBGA
- 4** CBG
- 5** CBD
- 6** THC-V
- 7** CBN
- 8** Delta-9-THC
- 9** Delta-8-THC
- 10** CBC
- 11** THC-A

