

uCATs by LCMS using Luna Omega 3um Polar C18 50x4.6mm

Column: Luna® Omega 3 µm Polar C18 100 Å, LC Column 50 x 4.6 mm, Ea

Dimensions: 50 x 4.6 mm ID

Order No: 00B-4760-E0

Elution Type: Gradient

Eluent A: Water with 0.1% formic acid

Eluent B: Methanol with 0.1% formic acid

Gradient Profile:	Step No.	Time (min)	Pct A	Pct B
	1	0	100	0
	2	3	0	100

Flow Rate: 0.7 mL/min

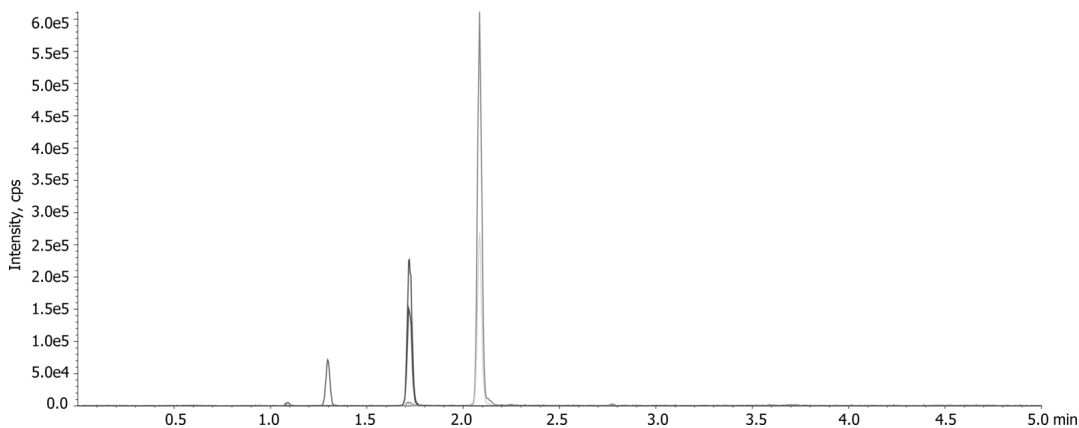
Col. Temp.: 25 °C

Detection: Electrospray Mass Spec (ESMS) @ 0.0000000000 (ambient)

24171



Products used in this application:



ANALYTES:

- 1 Metanephrine
- 2 Normetanephrine
- 3 3-Methoxytyramine



Sample Preparation Details

for HPLC Application ID No.: 24171

uCATs by LCMS using Luna Omega 3um Polar C18 50x4.6mm

PRODUCT DESCRIPTION:

StrataTM-X-CW Polymeric Weak Cation, microelution 2 mg / well, 96-Well Plates , 1/Pk

Order No.: 8M-S035-4GA

SOLID PHASE EXTRACTION (SPE) PROCEDURE:

Note: The solvent volumes shown below are for a 2 mg bed mass.

The solvent volumes will need to be adjusted for a smaller or larger bed mass.

Condition:

Load:

Wash:

Dry:

3 minutes under high vacuum

Elute:

Final Prep and Analysis:

Pool eluents and dilute with 100 µL of 0.1% Formic acid in water

Inject: 5 µL on HPLC Electrospray Mass Spec (ESMS) @ 0.000000000 (ambient)

ANALYTES:	Spiked Conc. (ng/mL)	Log P	pKa	% Rec	%RSC (n=0)
1 Metanephrene	0				
2 Normetanephrene	0				
3 3-Methoxytyramine	0				

Note: This method is designed as a convenient starting point for further investigation and can be tailored to meet your extraction goals.
Call your local Phenomenex Representative for assistance in method development and optimization techniques.

©2025 Phenomenex Inc. All rights reserved.

For more information contact your Phenomenex Representative at support@phenomenex.com



Phenomenex products are available worldwide.

www.phenomenex.com

support@phenomenex.com