

Chiral Separation of Suprofen on Lux 5µm i-Amylose-1 in Ethyl Acetate

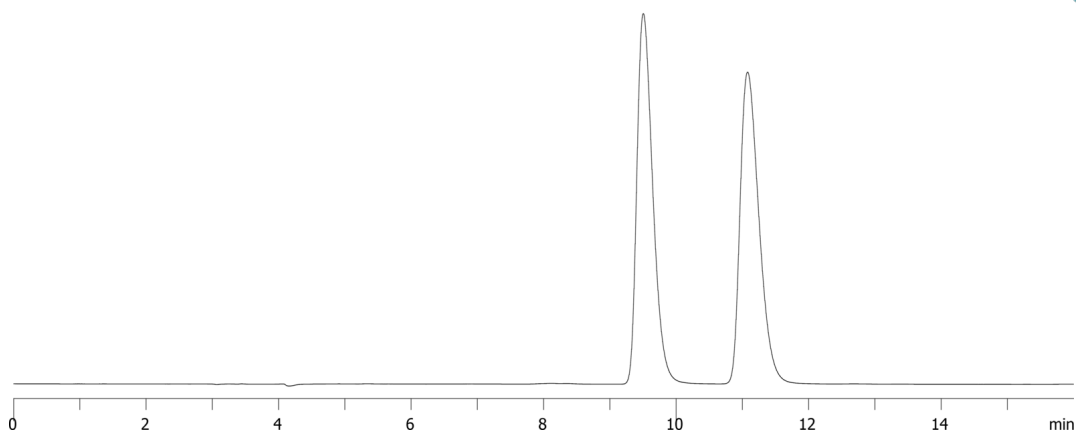
Column: Lux® 5 µm i-Amylose-1, LC Column 250 x 4.6 mm, Ea
Dimensions: 250 x 4.6 mm ID
Order No: 00G-4762-E0
Elution Type: Isocratic
Eluent A: 0.1% DEA in Hexane
Eluent B: 0.1% TFA in Ethyl acetate
Gradient

Step No.	Time (min)	Pct A	Pct B
1	0	70	30

Profile:
Flow Rate: 1 mL/min
Col. Temp.: ambient
Detection: Electrospray Mass Spec (ESMS) @ 0.000000000 (ambient)
24488



Products used in this application:



ANALYTES:

- 1 Suprofen
Retention Time: 9.503 min
- 2 Suprofen
Retention Time: 11.076 min