

Trastuzumab Peptide Mapping with Tryptic Digest on bioZen 1.6 µm Peptide PS-C18

Column: bioZen™ 1.6 µm Peptide PS-C18, LC Column 150 x 2.1 mm, Ea

Dimensions: 150 x 2.1 mm ID

Order No: 00F-4770-AN

Elution Type: Gradient

Eluent A: 0.1% Formic acid in water

Eluent B: 0.1% Formic acid in acetonitrile

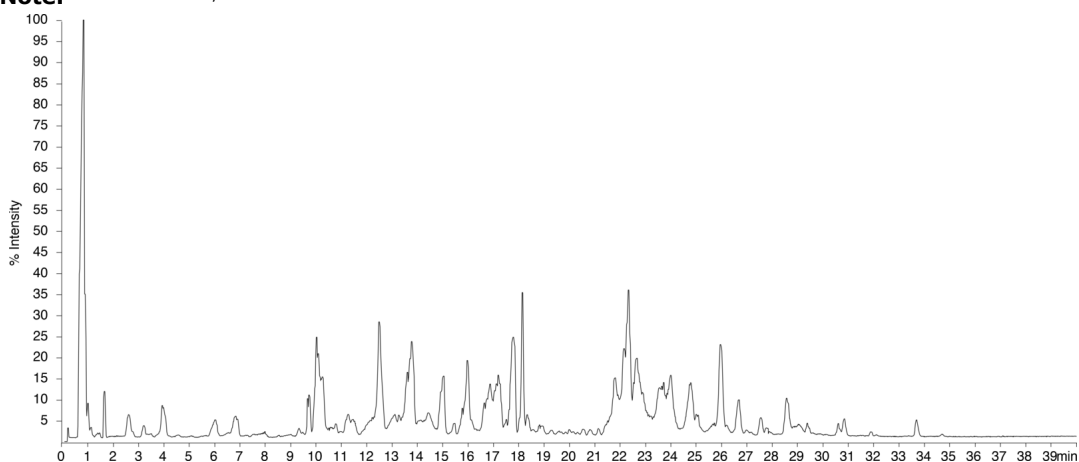
Gradient Profile:	Step No.	Time (min)	Pct A	Pct B
	1	0	99	1
	2	0.5	99	1
	3	50	50	50
	4	55	50	50
	5	56	5	95

Flow Rate: 0.3 mL/min

Col. Temp.: 40 °C

Detection: LC/MS @ (ambient)

Analyst Note: 1% acetonitrile, 0.1% formic acid in water



ANALYTES:

- 1 Tryptic Digest of Trastuzumab

