

Dicamba and Acidic Herbicides LC-MS/MS in Agricultural Field Samples

Column: Kinetex® F5 2.6µm 100 Å, LC Column 100 x 3.0 mm, Ea

Dimensions: 100 x 3 mm ID

Order No: 00D-4723-Y0

Elution Type: Gradient

Eluent A: water

Eluent B: 0.2% formic acid in methanol

Gradient Profile:	Step No.	Time (min)	Pct A	Pct B
	1	0	98	2
	2	1	60	40
	3	4	48	52
	4	12	15	85
	5	13.5	10	90
	6	15.5	10	90
	7	15.6	98	2

Flow Rate: 0.5 mL/min

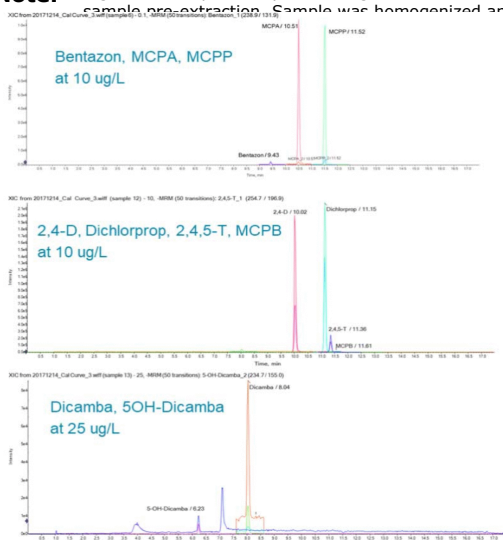
Col. Temp.: 30 °C

Detection: LC/MS/MS @ (ambient)

Analyst Note: 5 g of soil sample or soybean foliage were collected from impacted and non-impacted agricultural field sites. Internal standard was added to the sample pre-extraction. Sample was homogenized and extracted with formic acid fortified acetonitrile. Sample was shaken for 15 minutes then



Products used in this application:



Dicamba and Acidic Herbicides LC-MS/MS in Agricultural Field Samples

ANALYTES:

1	13C6-DCSA	41	Dichlorprop_3
2	2,4,5-T_1	42	Dichlorprop_4
3	2,4,5-T_2	43	MCPA_1
4	2,4,5-T_3	44	MCPA_2
5	2,4,5-TP_1	45	MCPA_3
6	2,4,5-TP_2	46	MCPB_1
7	2,4-D_1	47	MCPB_2
8	2,4-D_2	48	MCPP_1
9	2,4-D_3	49	MCPP_2
10	2,4-D_4	50	MCPP_3
11	2,4-DB_1		
12	2,4-DB_2		
13	2,4-DB_3		
14	2,4-DB_4		
15	5-OH-Dicamba_1		
16	5-OH-Dicamba_2		
17	5-OH-Dicamba_3		
18	5-OH-Dicamba_4		
19	Acifluorfen_1		
20	Acifluorfen_2		
21	Acifluorfen_3		
22	Acifluorfen_4		
23	Bentazon_1		
24	Bentazon_3		
25	Bentazon_4		
26	d3-Dicamba_1		
27	d3-Dicamba_2		
28	DCGA_1		
29	DCGA_2		
30	DCGA_3		
31	DCGA_4		
32	DCSA_1		
33	DCSA_2		
34	DCSA_3		
35	DCSA_4		
36	Dicamba_1		
37	Dicamba_2		
38	Dicamba_3		
39	Dichlorprop_1		
40	Dichlorprop_2		

