

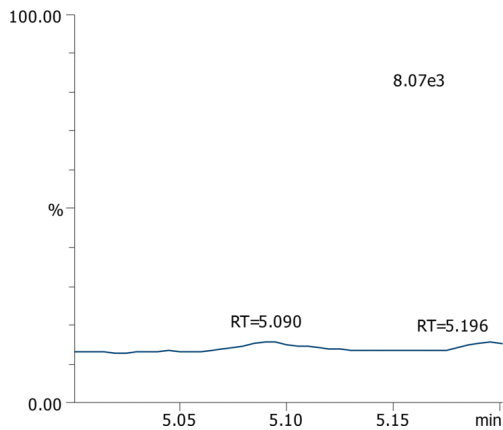
**NDMA and NDEA by GC/MS on a ZB-624Plus**

**Column:** Zebron ZB-624plus, GC Cap. Column 30m x 0.25mm x 1.4µm, Ea  
**Phase:** Proprietary Pesticides Phase  
**Dimensions:** 30 meters x 0.25 mm x 1.4 µm  
**Order No:** 7HG-G040-27  
**Oven Profile:** 60°C for 1 min to 240°C @ 20°C/min 240°C for 1 min

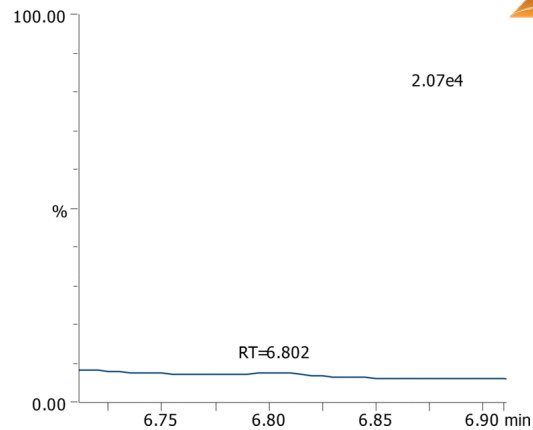
**Carrier Gas:** Constant Flow Helium, 36.1 cm/sec  
**Injection:** Split 10:1 1 µL @ 150°C  
**Detection:** GC/MS (250°C)  
**Analyst Note:** Pharmaceutical API API is dissolved in 1 mL of DMSO in a 20 mL headspace vial.

**Products used in this application:**

Q 74.00 (+)



Q 102.00 (+)

**ANALYTES:**

- 1 NDMA  
Retention Time: 5.094 min
- 2 NDEA  
Retention Time: 6.808 min

