

HPLC Application

ID No.: 25498

Bile Acids by LCMS, Kinetex 2.6u PS C18 100x2.1mm (Murideoxycholic acid and Hyodeoxycholic acid)

Column: Kinetex® 2.6 µm PS C18 100 Å, LC Column 100 x 2.1 mm, Ea

Dimensions: 100 x 2.1 mm ID

Order No: 00D-4780-AN

Elution Type: Gradient

Eluent A: 10mM Ammonium Acetate in Water

Eluent B: Acetonitrile

Gradient	Step No.	Time (min)	Pct A	Pct B
Profile:	1	0	80	20
	2	6	60	40
	3	6.1	80	20
	4	9	80	20

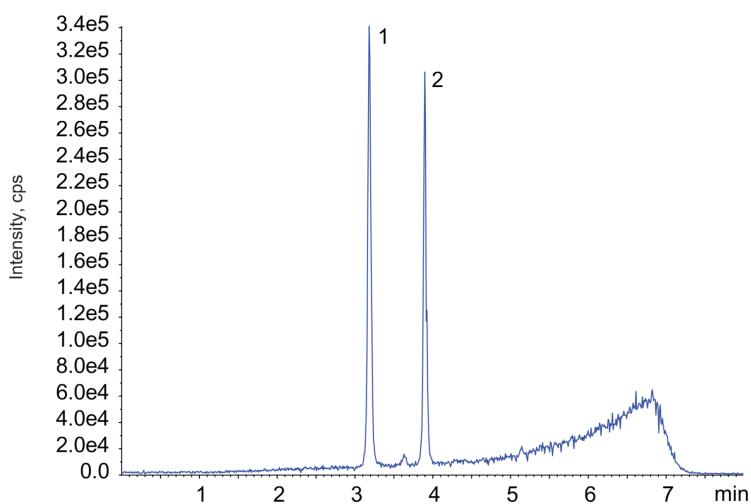
Flow Rate: 500 µL/min

Col. Temp.: 30 °C

Detection: LC/MS @ (30 °C)
25498



Products used in this application:



Bile Acids by LCMS, Kinetex 2.6u PS C18 100x2.1mm (Murideoxycholic acid and Hyodeoxycholic acid)

ANALYTES:

- 1 Murideo
- 2 Hyodeoxycholic
- 3
- 4
- 5
- 6
- 7
- 8
- 9
- 10

