

Berberine extracted from Goldenseal pill on Kinetex PS-C18

Column: Kinetex® 2.6 µm PS C18 100 Å, LC Column 50 x 4.6 mm, Ea

Dimensions: 50 x 4.6 mm ID

Order No: 00B-4780-E0

Elution Type: Gradient

Eluent A: 20mM Potassium dihydrogen phosphate pH 4.6

Eluent B: Acetonitrile

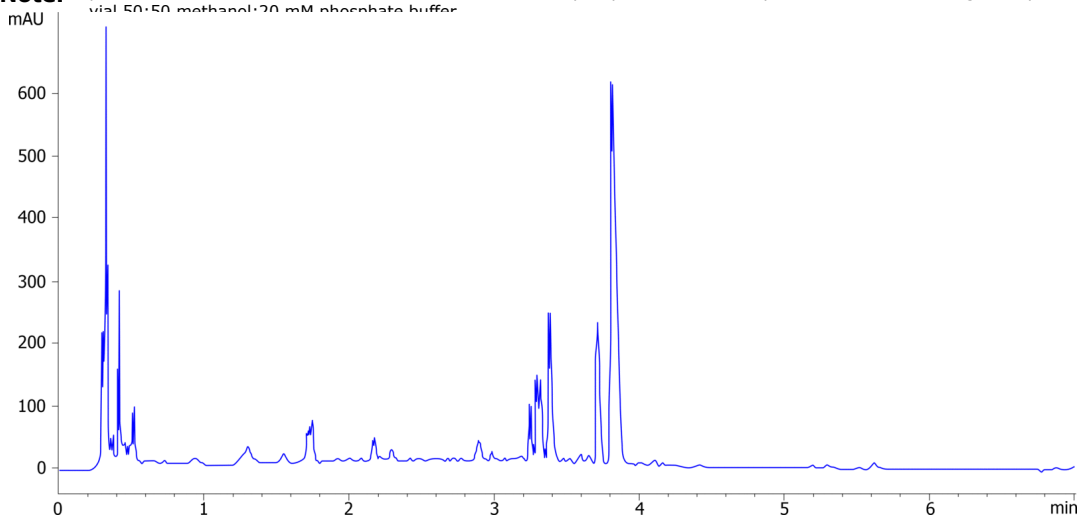
Gradient Profile:	Step No.	Time (min)	Pct A	Pct B
	1	0	90	10
	2	7	35	65
	3	8	35	65
	4	8.5	90	10
	5	10	90	10

Flow Rate: 1.5 mL/min

Col. Temp.: 23 °C

Detection: LC/UV (DAD, PDA) @ 235.000000000 nm (nanometers) (ambient)

Analyst Note: pill crushed and dissolved in 10mls 50:50 methanol:20 mM phosphate buffer. Sample vortexed and centrifuged. Supernatant transferred to HPLC vial 50:50 methanol:20 mM phosphate buffer



ANALYTES:

1 berberine

Retention Time: 3.805 min



Products used in this application:

