

# HPLC Application

ID No.: 25540

## Metformin Dissolution Test 3 with Prodigy ODS-3 (RS)

**Column:** Prodigy<sup>™</sup> 5 µm ODS-3 100 Å, LC Column 250 x 4.6 mm, Ea  
**Dimensions:** 250 x 4.6 mm ID  
**Order No:** 00G-4097-E0  
**Elution Type:** Isocratic  
**Eluent A:** 1.38 g of monobasic sodium phosphate in about 1800 mL of water; 3.484 g of 1-pentane:  
**Eluent B:** Acetonitrile  
**Gradient**

Step No.	Time (min)	Pct A	Pct B
1	15	95	5

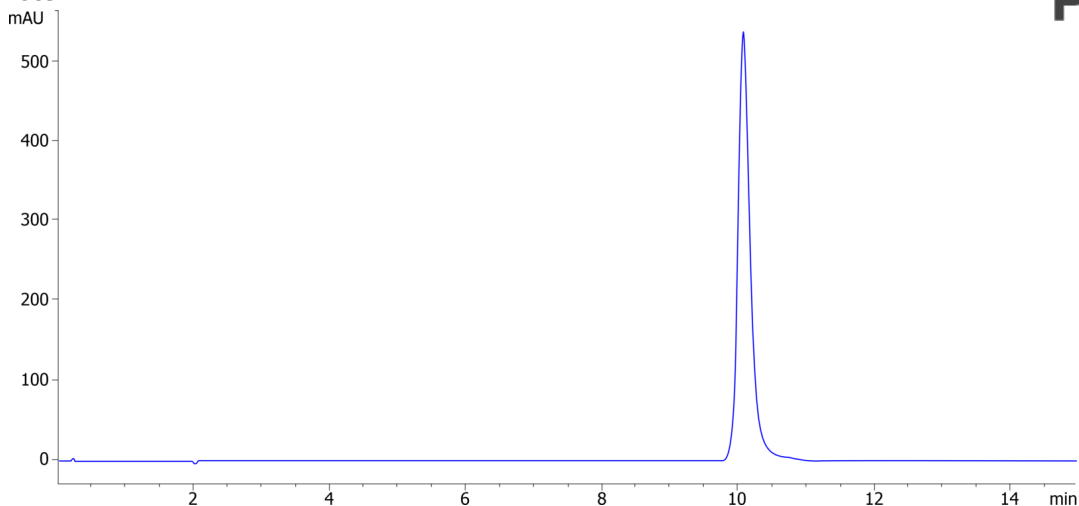
**Profile:**  
**Flow Rate:** 1 mL/min  
**Col. Temp.:** 25 °C  
**Detection:** LC/UV (DAD, PDA) @ 230.000000000 nm (nanometers) (ambient)  
**Analyst Note:** Acetonitrile and Buffer (1:19) equivalent to 95% A (buffer) / 5% B (Acetonitrile)



added, the

Products used in this application:

# Prodigy<sup>™</sup>



### ANALYTES:

1 Metformin

Retention Time: 10.08 min

