

## Clean-Up of Phospholipids in Human Plasma Comparing PPT VS. Strata-X PRO SPE on a Kinetex 2.6 µm C18 50 x 2.1 mm

**Column:** Kinetex® 2.6 µm C18 100 Å, LC Column 50 x 2.1 mm, Ea

**Dimensions:** 50 x 2.1 mm ID

**Order No:** 00B-4462-AN

**Elution Type:** Gradient

**Eluent A:** 0.1% Formic acid in water

**Eluent B:** 0.1% Formic acid in methanol

Gradient Profile:	Step No.	Time (min)	Pct A	Pct B
	1	0	60	40
	2	0.5	5	95
	3	11.5	5	95
	4	11.51	60	40
	5	13.5	60	40

**Flow Rate:** 400 µL/min

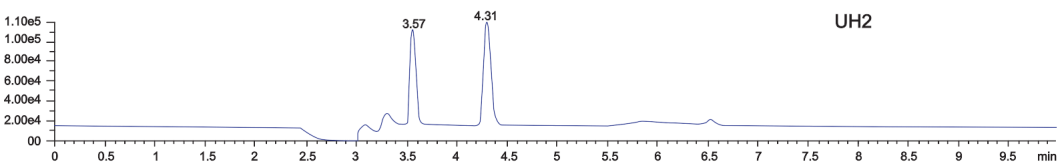
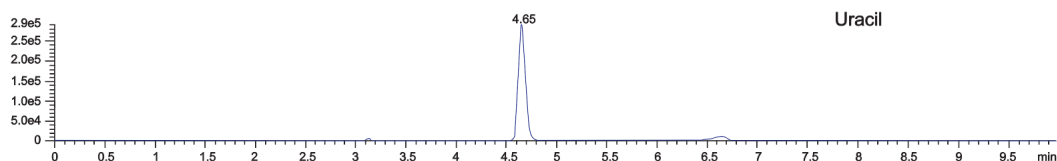
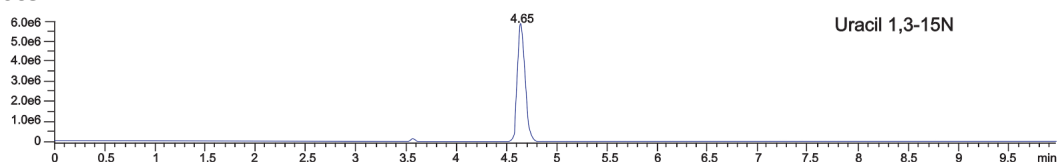
**Col. Temp.:** 40 °C

**Detection:** LC/MS/MS @ (40 °C)

**Analyst Note:** Analyte dilution not needed (Direct injection of the extracted sample)



Products used in this application:



### ANALYTES:

- 1 Lyso PC  
Retention Time: 2.4 min
- 2 PC-1  
Retention Time: 6 min
- 3 PC-2  
Retention Time: 6.5 min



# Sample Preparation Details

for HPLC Application ID No.: 25779

## Clean-Up of Phospholipids in Human Plasma Comparing PPT VS. Strata-X PRO SPE on a Kinetex 2.6 µm C18 50 x 2

### PRODUCT DESCRIPTION:

Strata X Pro, 96-Well Plate, 30mg/well

Order No.: 8E-S536-TGA

### SOLID PHASE EXTRACTION (SPE) PROCEDURE:

**Note:** The solvent volumes shown below are for a bed mass.

The solvent volumes will need to be adjusted for a smaller or larger bed mass.

#### Condition:

#### Load:

#### Wash:

#### Dry:

#### Elute:

#### Final Prep and Analysis:

Sample Pre-treatment:

- Add 100 µL Serum to tube

Inject: 2 µL on HPLC LC/MS/MS @ (40°C)

ANALYTES:	Spiked Conc. (ng/mL)	Log P	pKa	% Rec	%RSC (n=0)
1 Lyso PC	0				
2 PC-1	0				
3 PC-2	0				

**Note:** This method is designed as a convenient starting point for further investigation and can be tailored to meet your extraction goals.  
Call your local Phenomenex Representative for assistance in method development and optimization techniques.

©2025 Phenomenex Inc. All rights reserved.

For more information contact your Phenomenex Representative at support@phenomenex.com



Phenomenex products are available worldwide.

[www.phenomenex.com](http://www.phenomenex.com)

[support@phenomenex.com](mailto:support@phenomenex.com)