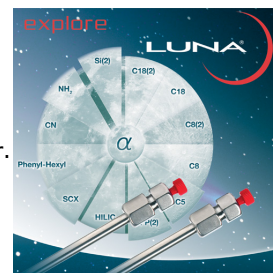


## Chloroquine Phosphate Tablet - USP Assay on Luna 5 µm C18(2) 150 x 4.6 mm

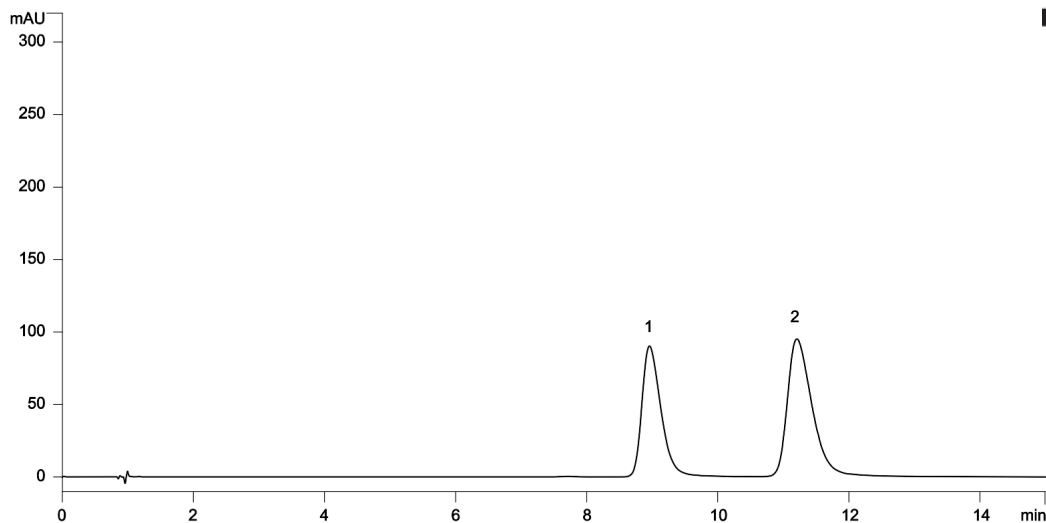
**Column:** Luna® 5 µm C18(2) 100 Å, LC Column 150 x 4.6 mm, Ea  
**Dimensions:** 150 x 4.6 mm ID  
**Order No:** 00F-4252-E0  
**Elution Type:** Isocratic  
**Eluent A:** Methanol and Buffer (22:78) Buffer: 6.8 g/L of monobasic potassium phosphate in water.  
**Gradient**  

Step No.	Time (min)	Pct A
1	0	100

**Profile:**  
**Flow Rate:** 1.2 mL/min  
**Col. Temp.:** 26 °C  
**Detection:** LC/UV (DAD, PDA) @ 224.000000000 nm (nanometers) (ambient)  
**Analyst Note:** system suitability solution (0.15 mg/mL USP Chloroquine phosphate RS and 0.15 mg/mL USP Amodiaquine hydrochloride RS in water)



Products used in this application:



### ANALYTES:

- 1** Chloroquine Phosphate  
Retention Time: 8.62 min
- 2** Amodiaquine Hydrochloride  
Retention Time: 10.724 min

