

HPLC Application

ID No.: 26253



Diclofenac Sodium Ph.Eur. Reference Solution A System Suitability on Kinetex 2.6 μ m C18 100x4.6mm LC/UV

Column: Kinetex® 2.6 μ m C18 100 Å, LC Column 100 x 4.6 mm, Ea

Dimensions: 100 x 4.6 mm ID

Order No: 00D-4462-E0

Elution Type: Isocratic

Eluent A: Mix 34 volumes of a solution containing 0.5 g/L of phosphoric acid R and 0.8 g/L of sodium

Gradient

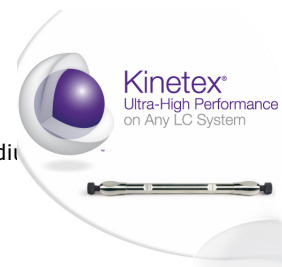
| Step No. | Time (min) | Pct A |
|----------|------------|-------|
| 1 | 40 | 100 |

Profile:

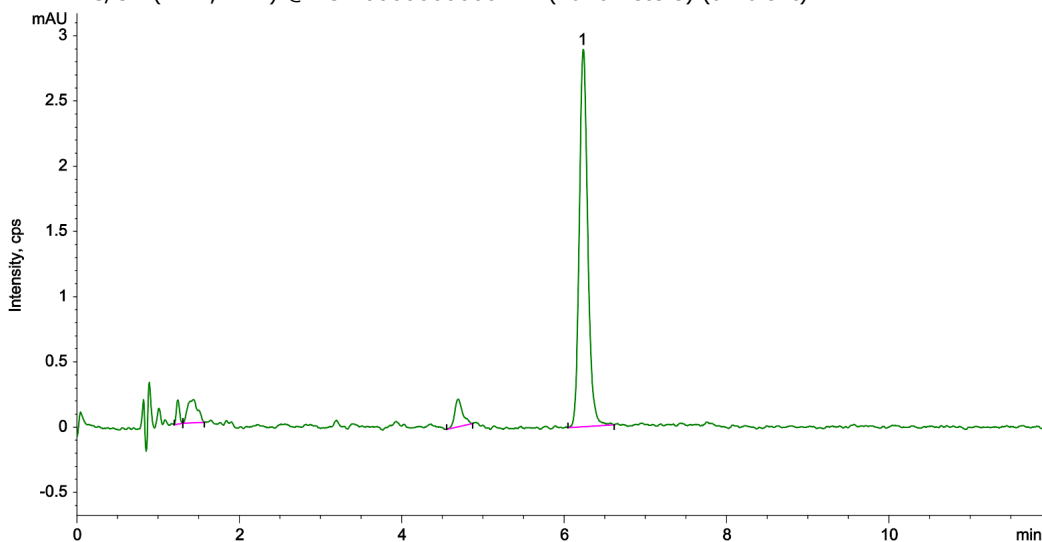
Flow Rate: 1 mL/min

Col. Temp.: 25 °C

Detection: LC/UV (DAD, PDA) @ 254.000000000 nm (nanometers) (ambient)



Products used in this application:



ANALYTES:

1 Diclofenac

Retention Time: 6.228 min

