

LC-MS/MS Pesticides (simazine) - No Filter in Cumin Extracts for the comparison of with/without Filter Vial

Column: Luna® Omega 3 µm C18 100 Å, LC Column 150 x 3.0 mm, Ea

Dimensions: 150 x 3 mm ID

Order No: 00F-4784-Y0

Elution Type: Gradient

Eluent A: 0.1% Formic Acid and 10mM Ammonium Acetate in water

Eluent B: 0.5% Formic Acid in Methanol

Gradient Profile:	Step No.	Time (min)	Pct A	Pct B
	1	0	95	5
	2	0.1	95	5
	3	0.5	40	60
	4	3.5	25	75
	5	8	15	85
	6	10.5	5	95
	7	12	5	95
	8	12.1	95	5
	9	18	95	5

Flow Rate: 0.4 mL/min

Col. Temp.: 20 °C

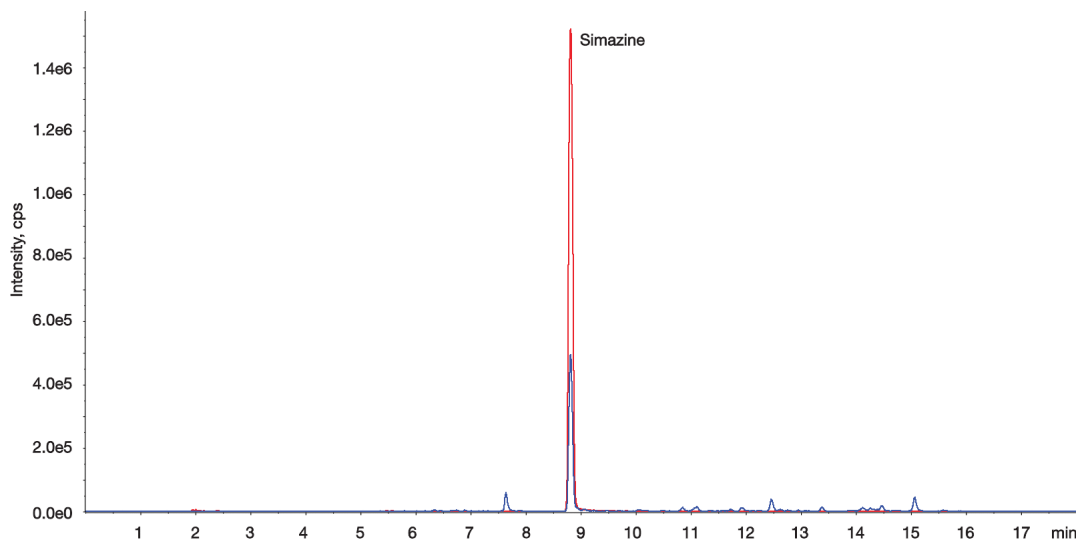
Detection: LC/MS/MS @ (ambient)

Analyst Note:

- Prepared 10mg/mL simazine solutions with other 17 pesticide standards
- Take sample to prepare a 10x Diluted mixture by placing 100uL of the existing mix into a 900uL of a 1:2 Water:Acetonitrile mix.
- Place 30uL of the 10x diluted mixture into 270 uL of the cumin powder supernatant for final analysis.



Products used in this application:



ANALYTES:

- simazine
Retention Time: 8.56 min
- simazine
Retention Time: 8.56 min

