

# HPLC Application

ID No.: 27709

## PhEur Atazanavir Sulfate - Related Substances; Test Solution C on Luna 3u C18(2) 150x4.6mm using Agilent 1260

**Column:** Luna® 3 µm C18(2) 100 Å, LC Column 150 x 4.6 mm, Ea

**Dimensions:** 150 x 4.6 mm ID

**Order No:** 00F-4251-E0

**Elution Type:** Gradient

**Eluent A:** mix 25 volumes of acetonitrile and 75 volumes of a freshly prepared 2.73 g/L solution of potassium dihydrogen phosphate pH 3.5 with water

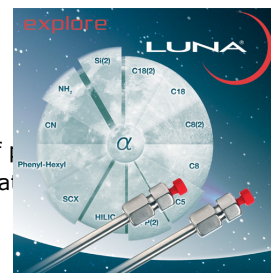
**Eluent B:** mix 25 volumes of a freshly prepared 2.73 g/L solution of potassium dihydrogen phosphate pH 3.5 with water

Gradient Profile:	Step No.	Time (min)	Pct A	Pct B
	1	0	100	0
	2	5.6	100	0
	3	45.6	0	100
	4	50	100	0
	5	57	100	0

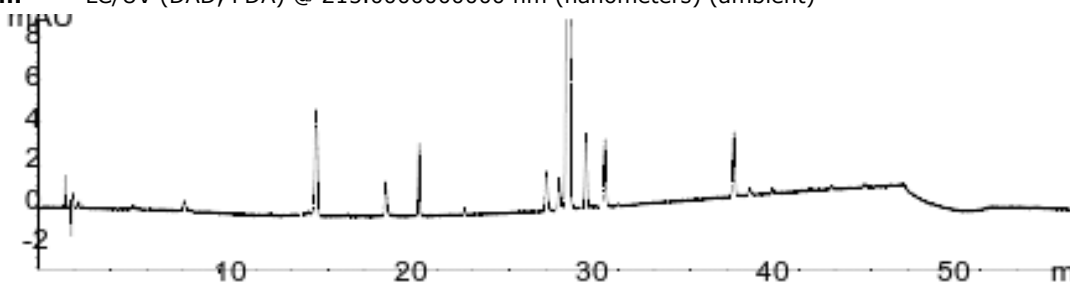
**Flow Rate:** 1 mL/min

**Col. Temp.:** 25 °C

**Detection:** LC/UV (DAD, PDA) @ 215.000000000 nm (nanometers) (ambient)



Products used in this application:



## PhEur Atazanavir Sulfate - Related Substances; Test Solution C on Luna 3u C18(2) 150x4.6mm using Agilent 126

### ANALYTES:

- 1** Impurity A
- 2** Impurity B
- 3** Unknown
- 4** Impurity C
- 5** Impurity E
- 6** Impurity F
- 7** Atazanavir
- 8** Impurity G
- 9** Impurity H
- 10** Unknown

