

Tryptic Map of a-Chymotrypsinogen

Column: Jupiter® 5 µm C18 300 Å, LC Column 250 x 4.6 mm, Ea

Dimensions: 250 x 4.6 mm ID

Order No: 00G-4053-E0

Elution Type: Gradient

Eluent A: 0.1% TFA in water

Eluent B: 0.1% TFA in acetonitrile

Gradient Profile:	Step No.	Time (min)	Pct A	Pct B
	1	0	95	5
	2	35	60	40

Flow Rate: 1 mL/min

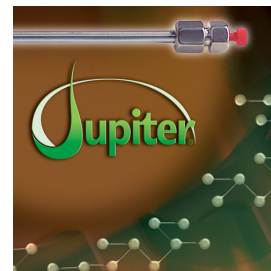
Col. Temp.: ambient

Detection: UV-Vis Abs.-Variable Wave.(UV) @ 215 nm (ambient)

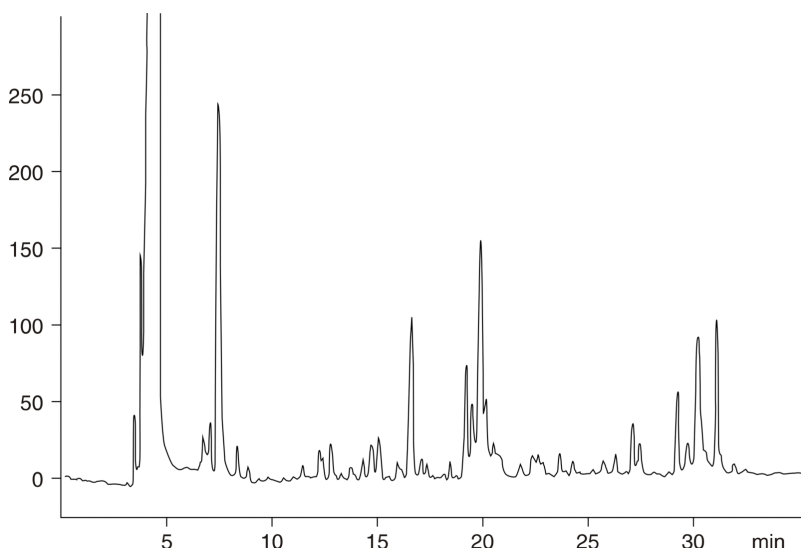
Analyst Note: SecurityGuard™ Guard Cartridge System extends column lifetime.

- SecurityGuard Cartridges, Widedpore C18 4 x 3.0mm, 10/Pk Part No.: AJ0-4321

- Holder Part No.: KJ0-4282



Products used in this application:



ANALYTES:

1 alpha-Chymotrypsinogen

