

# HPLC Application

ID No.: 5377

## Proteins on Jupiter C18 250x4.6mm

**Column:** Jupiter<sup>®</sup> 5 µm C18 300 Å, LC Column 250 x 4.6 mm, Ea

**Dimensions:** 250 x 4.6 mm ID

**Order No:** 00G-4053-E0

**Elution Type:** Gradient

**Eluent A:** 0.1% TFA in water

**Eluent B:** 0.1% TFA in acetonitrile

Gradient Profile:	Step No.	Time (min)	Pct A	Pct B
	1	0	95	5
	2	7	74	26
	3	10	66	34
	4	20	46	54

**Flow Rate:** 1 mL/min

**Col. Temp.:** ambient

**Detection:** UV-Vis Abs.-Indirect (UV) @ 0.000000000 (ambient)

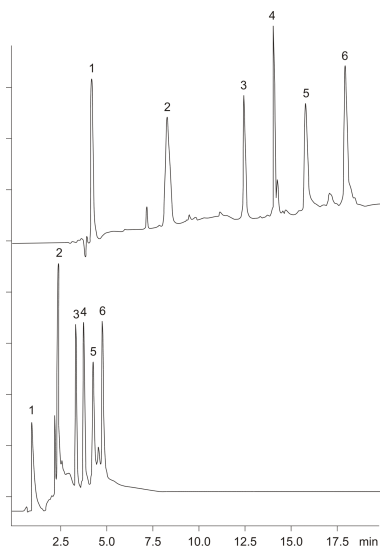
**Analyst Note:** SecurityGuard<sup>™</sup> Guard Cartridge System extends column lifetime.

- SecurityGuard Cartridges, Widepore C18 4 x 3.0mm, 10/Pk Part No.: AJ0-4321

- Holder Part No.: KJ0-4282



Products used in this application:



### ANALYTES:

- 1 Alkaline phosphatase
- 2 Cyanocobalamin
- 3 RNase
- 4 Insulin
- 5 Transferrin
- 6 Trypsin inhibitor

